

Contents

Glossary	3
Apply Online	4
Term Dates	5
Who is responsible for School Admissions in Derby?	6
Starting Primary School	8
Appeals	13
Transport	13
Other Information (include separated parents)	14
Admission policies in Derby	17
Community Schools	18
Map of schools in Derby	29
Academy and Trust schools - Operating Standard Admission Criteria	31
Academy/Foundation/Trust/Free schools - Varied Admission Criteria	36
Special schools	73
Nursery schools	73
Nursery entitlements	74
Useful contacts	78

Please note: If your child has an Education Health and Care Plan (EHCP), this Handbook is not relevant because the admission arrangements are different. These are detailed in the bookle 'Which School for my Child?' which explains the special arrangements for these children. To get a copy, contact the Council on **01332 641414** or email sendiass@derby.gov.uk

Glossary

“All-Through” Schools serve nursery, primary and secondary age children. The Governors are responsible for all admissions. Bemrose School is an All Through Trust School.

Academies are all ability schools established by sponsors from business, faith or voluntary groups working in partnership with central Government. Governors are responsible for all admissions.

Community schools are managed by the head teacher and governors in partnership with Derby City Council, which arranges admissions to these schools.

Foundation schools are maintained by the local authority, but the governors are responsible for all admissions.

Free schools are all-ability state-funded schools set up in response to parental demand.

Trust schools are maintained schools owned by a trust, where the governors are responsible for all admissions.

All of the above schools are called ‘mainstream schools’.

Special schools are attended by children with an Education Health and Care Plan (EHCP). Special schools provide for pupils whose degree of disability requires a more comprehensive specialist approach than a mainstream school or enhanced resource school can provide.

Enhanced Resource Schools are mainstream schools with additional resources for children with an EHCP where there is more specialist support and staff. Pupils are not generally taught separately and are included in the mainstream classes.

Private and voluntary sector nursery providers provide educational settings that are not maintained by the Council. They include nurseries,

playgroups, private or independent schools, kindergartens and childminders.

The catchment area is a defined geographical area, which the school serves. If your child lives in the normal area of a school at the time of application and at the closing date and you request a place there, you will have priority over other children when the applications for admissions are considered. If you want to know which catchment area you live in, contact the Admissions Team on 01332 642730.

The curriculum is the range of learning opportunities provided by the school including the subjects studied and activities inside and outside the classroom such as extracurricular clubs, educational visits and field studies.

We use the word **parent** throughout this booklet. It means anyone who has legal responsibility for, or care of, a child.

Independent Appeal Panels are set up to hear any appeals against a refusal to offer a place at a school. The panels are completely independent of the school and the Council. Their decision is binding on everyone.

Where to go for more information For general enquiries contact:
Derby City Council, People Services Directorate,
The Council House, Corporation Street,
Derby DE1 2FS
Tel: **01332 293111** Web: www.derby.gov.uk

For admission enquiries contact **01332 642730** or email primary.admissions@derby.gov.uk

Church of England Schools in Derby
The Derby Diocesan Board of Education,
Church House, Full Street, Derby DE1 3DR Tel:
01332 388660.

Catholic Schools in Derby
The Education Service, The Diocesan Centre,
Mornington Crescent, Mackworth, Derby DE22
4BD Tel: **01332 293833.**

Apply Online

If your child is due to start primary or infant school for the first time or is transferring from an infant school to a junior school in September 2025, you will have to apply for a school place. Paper application forms are available but many parents and carers find it easier and quicker to apply electronically using the online facility.

You can scan our QR Code with your smartphone – here's how to do it:

1. Open the camera App on your smartphone
2. Point your phone at the QR code, as if you were taking a picture of it – make sure you can see all four corners of the code. When correctly scanned, a pop-up banner will appear, saying what the QR code is linked to (in this case, derby.gov.uk).
3. Simply click on the link to take you to our online application site



To apply online visit derby.gov.uk/primary

Advantages of applying online include...

- it is quick and easy to do.
- you will get an email confirmation that your application has been received.
- the system helps you by checking for errors.
- the security of knowing that you have made your own application and the details should be correct
- ability to go back and amend the application any time before it is submitted
- there is no risk that your application will get lost in the post.
- the system has security procedures that will prevent anyone seeing information they are not entitled to see.
- available 24 hours a day seven days a week up until the closing date and time of **15 January 2026**.
- On National Offer Day – 16 April 2026, you can log into your account and see which school you have been offered. Paper or telephone applicants will not have this facility.

**IMPORTANT – please make a note of your username and password.
Your username will be your email address.**

For those who are unable to use our online facilities, there are paper forms available, and you can also apply by telephone.

School Term Dates

2024-2025

Term	Dates
Autumn	Wednesday 4 September to Friday 25 October Monday 4 November to Friday 20 December
Spring	Monday 6 January to Friday 14 February Monday 24 February to Friday 4 April
Summer	Tuesday 22 April to Friday 23 May Monday 2 June to Thursday 24 July

2025-2026

Term	Dates
Autumn	Thursday 4 September to Friday 24 October Monday 3 November to Friday 19 December
Spring	Monday 5 January to Friday 13 February Monday 23 February to Friday 27 March
Summer	Monday 13 April to Friday 22 May Monday 1 June to Thursday 23 July

Who is responsible for School Admissions in Derby?

There are seven types of primary school in Derby:

- Academies
- Community Schools • Free Schools
- Foundation Schools
- Special Schools
- Trust Schools
- Voluntary Aided Schools

For all Derby's **Community Schools**, Derby City Council is the admissions authority and is responsible for deciding the admission arrangements for children at these schools. The head teacher and school governors follow the Council's arrangements.

For **Academies, Trust, Free and Foundation Schools** the school governors are the admissions authority.

Special Schools only admit pupils with an EHCP, and the admissions for these schools are covered by separate arrangements.

See the free booklet 'Which School for my Child?' that explains the special arrangements for these children. To get a copy, contact the Council on **01332 641414**.

The admissions authority decides on things such as:

- which area a school should normally serve - this is '**the catchment area**' - so the school serving the area is called 'the catchment area school'
- **the admissions criteria** - the things the authority takes into account when deciding which children to admit to their school if the applications go over the school's admission limit how parents can appeal against a decision not to offer a place at their preferred school.

When children have to start school

This section does not apply to children born on or after **1 September 2021**. For information on education for these children contact Childcare and Families Information Service on **01332 640758**.

If your child was born between **1 September 2020** and **31 August 2021**, you should apply for a school place, even if your child already attends a nursery class attached to an infant or primary school. By law, parents must make sure children start full-time education when they reach compulsory school age - this is the start of the term after their fifth birthday. It is parents' responsibility to establish which is the catchment area school for their child and whether any travel assistance is available before applying for a place at that school. It is also parents' responsibility to know which council's area they live in.

All the Council's primary schools offer children places in reception classes before they reach compulsory school age. You can delay your child's start at school until later than the school's normal admission date, but you must take the place up within the same school year - September to July - in which it is offered.

It is important that you apply for a place at the school or schools you would like your child to attend. You have a legal right to do this as a parent. The admission authorities must meet your application wherever possible - as long as this doesn't make the school overcrowded. See **Admission limit**. If your religious beliefs or convictions influence your choice of school, you should mention this in your application.

Admission limit

Each school has a limit to the number of pupils it can admit to the first year in the school - this is known as the 'intake year'. We show each school's admission limit at the back of this booklet - see pages 18 - 72. This limit is based on the amount of

space available in the school and on past admissions. Once the admission limit is reached, the admissions authority cannot offer any more places, even to children who have moved into the school's catchment area. This limit covers admissions for the whole school year. In years other than the intake year, the admissions authority may be able to admit pupils above the admission limit if they choose. They must take into account the school's physical capacity and must keep infant class sizes to no more than 30 children.

Changing schools during the school year

Moving your child to another school is a very serious step to take. It can affect your child in many ways. It is important that you consider whether a transfer is really the best option. Before deciding to move your child to another school, please read this information carefully.

Moving to a new school may not mean that a problem is solved - it can happen again and could be worse because your child will not know who their new teachers and other pupils are. Your child and their needs will not be known to staff. Many things that worry parents and pupils can be sorted out without the need to move schools.

Talking to your child and staff at your child's present school should avoid a transfer between schools in

almost all circumstances. While all schools follow the National Curriculum, schools will teach different topics at different times of the year.

- If your child is unhappy at school or you feel that your child is being bullied, speak to their class teacher, make an appointment to see the headteacher.
- If you have a complaint about the school, the teachers or the work your child is doing and it cannot be resolved by the teaching staff, put your complaint in writing to the school's governors.
- If your child is not attending school, talk to your child about why they do not attend and speak to their teachers. You can also talk to an Education Welfare Officer on **01332 641448**.

If you want your child to change school because you are moving, contact the Council in whose area your new address is located for information about applying for schools or how to appeal.



Starting Primary School

Once the admission limit is reached, the admissions authority cannot offer any more places, even to children who have moved into the school's catchment area. The admissions limit covers admissions for the whole school year. In years other than the first year, the admissions authority may be able to admit pupils above the admission limit if it chooses. However, they must take into account the school's physical capacity.

Applying for a school place

- You can make an application for up to three different schools. Once you have decided which school or schools you would like your child to attend, you must apply for a place at the local school in whose catchment area you live, if you want your child to go there. This is 'the catchment area school'. This will not be done automatically just because you live in the catchment area. It is parents' responsibility to establish which is the catchment area school for their child and whether any travel assistance is available before applying for a place at a school. It is also parents' responsibility to know which Council's area they live in. You should also apply for a second school, even if your preferred school is your catchment area school. This is in case your preferred school gets too many applications and becomes oversubscribed and it can't offer a place to all the children who live in its catchment area or;
- at another school that you prefer your child to attend. We still strongly advise you to request a place at your catchment area school as well, even if it is your third preference, in case the schools you prefer cannot offer your child a place. You will then have priority when admissions are decided at your catchment school. If you do not get a place at one of your preferred schools and did not request a place at the local catchment school, you may find that the local

school is full and cannot offer your child a place, even though you live in its catchment area or;

- at the school that your child is already attending, if they are in the nursery and you want your child to transfer to the school's infant department. Your child has no automatic right to a place in the school and, if the school is over-subscribed, the admissions criteria will be used. If this school

is not your catchment area school we strongly advise you to request a place at your catchment area school as well, in case the school you prefer cannot offer your child a place. You will then have priority when admissions are decided at your local school.

Catchment areas in Derby can be seen by going to <http://maps.derby.gov.uk> (type an address into 'search' bar > map layers > education > choose **either** 'primary' or 'secondary').

Note: If you put more than one preference this will not jeopardise your chance of getting your first preference.

To apply, you must fill in the Common Application Form that you can get from a school or the Council. Parents can also fill in the Common Application Form online by visiting derby.gov.uk/primary.

Important: Local authorities are not able to guarantee the availability of school places at any school and this is the case even for schools where siblings attend. The Council must allocate school places strictly in line with the Published Admission Arrangements of the school and cannot take individual families' circumstances into account.

Note: you must think very carefully about your preferences and their order before you submit them, as they cannot be changed after the closing date unless you have moved address which changes your catchment area.

The Council will acknowledge all applications it receives within two weeks. This will state the rank order of your schools and you should check this to make sure it is correct.

Note: If you do not get an acknowledgment it means that we have not received your application, or it has been processed using an old address. You must get an acknowledgement for your application to be considered, even if you have hand-delivered, sent your application by Recorded or Special Delivery, or given it to your child's nursery or infant school. If you do not get an acknowledgment at least one week before the closing date, please contact the Council as soon as possible on **01332 642730**.

Deferred Admission

All parents can request that the date their child is admitted to school is deferred until later in the academic year or until the term in which the child reaches the compulsory school age and can also request that their child takes up a place part-time until the child reaches compulsory school age.

Requests will be considered in consultation with the school and /or the Local Authority.

Summer Born Children

The School Admissions Code requires school admission authorities to provide for the admission of all children in the September following their fourth birthday. However, a child is not required to start school until they have reached compulsory school age following their fifth birthday (a child reaches compulsory school age on the prescribed day following his/her fifth birthday or on his/her fifth birthday if it falls on a prescribed day. The prescribed days are 31 December, 31 March and 31 August).

For summer born children this could be a full school year (into Year 1) after the point at which they could first be admitted.

For summer born children parents can request that their child attends part-time until they reach compulsory school age or that the date their child is admitted to school is deferred until later in the same academic year. (All children born from the beginning of April to the end of August reach compulsory school age in the September following

their fifth birthday. It is expected that most requests for children to be admitted out of their normal year group will come from parents of children born in the later summer months or those born prematurely).

Where a parent considers sending their summer born children to school in the September after their fifth birthday and requests that they enter the reception class in September 2025 instead of the Year 1 class, the admission authority is required to make the decision based on the individual circumstances of each case. **You still need to make an application for delayed entry at the normal time and before the closing date of 15 January 2025 as well as submitting an application for a school place in the current round.**

Factors that will be considered include:

- the needs of the child and the possible impact on them of entering Year 1 without having first attended the reception class;
- the case of children born prematurely, the fact that they may have naturally fallen into the lower age group if they had been born on their expected date of birth;
- whether delayed social, emotional or physical development is adversely affecting their readiness for school.

In these cases supporting documentation from professionals involved may be required.

More information about this may be found at www.gov.uk/government/publications/summer-bornchildren-school-admission

Can my child attend a school outside Derby?

If you want your child to attend a school outside Derby you should still fill in the Common Application Form from Derby City Council and include the school as one of your preferences.

The Council, which maintains the school, or the governors of aided, free, academy or foundation schools, will take the decision on whether your child can be offered a place.

Can my child attend a Derby school if we don't live in Derby?

If you don't live in Derby but would like your child to attend a school in Derby, you will need to fill in a

Common Application Form from the Council covering the area where you live. We will look at your application using the admissions criteria on page 16.

Transfer to Junior School

There are only a few primary schools that take in extra children in Year 3 as part of the Junior Transfer application process. Parents can name these primary schools as one of their preferences, but should any other *primary* school be named, they will be disregarded. The primary schools that can be named are:

- Dale Community Primary School
- St John Fisher Catholic Voluntary Academy.

Closing date for applications

For infant, junior and primary community, academy and foundation schools, the closing date for parents to submit their application for a place for the 2025/2025 school year is **15 January 2025**. We will contact you on behalf of the Admissions Authority, on **16 April 2025**, to let you know whether they can offer your child a place. Applications will be dealt with using the address the child resides at the closing date. Reassessment of any new address, if applicable, will then be made after provisional offers have been decided. If you want to find out your catchment area school, please ring the Admissions Team on **01332 642730**, email primary.admissions@derby.gov.uk or catchment areas can be viewed online at derby.gov.uk/admissions.

If you apply for a place after **15 January 2025** the admissions authority for the school will not look at

If, after one term, it's found that the place was obtained in this way, any brothers or sisters of the child will not benefit from 'sibling priority'.

We cannot consider informal living arrangements unless there are very special circumstances for which we will need to see proof.

We need to see the end of tenancy or proof of sale of the original property and tenancy agreement for the new property or proof of purchase of the new property; for example a solicitor's letter about the completion of the sale

your application in the first round of allocations to decide which children they can admit in the next school year. After that, if there are still spare places, the admissions authority will look at your application, along with any other applications that were not made by the closing date. When you apply for a place by the closing date, you will have priority over those who have not applied on time when the admissions authority looks at the applications it's received. If you do move after the closing date and before your child is due to start there, contact the Admissions Team to check if the school can still offer your child a place. If it's not possible to give your child a place at your preferred school, the Council will write to you, explaining how you can appeal against the decision. See Appeals on page 13.

What happens if I change address?

House Moves - In all cases including those outlined below, if your catchment area changes we will need to see proof that it is your main residential address. A main residential address is **where your child lives at time of application and admission**. In cases where children share residency of parents at different addresses, we will take the main address as the one from which parent receives Child Benefit. If this information is insufficient or inconclusive, the Council can request further information.

We need this information to prevent school places being gained fraudulently. Admission authorities have the right to withdraw the offer of a school place if it is found that it was obtained on the basis of a fraudulent or intentionally misleading application, up to one term after admission.

and the exchange of contracts. If this information is insufficient or inconclusive, the Council can request further information.

Applications for entry into Reception, Year 3 and Year 7 in September 2025.

What happens if:

- **I move before the closing date?** If you move before the closing date and can provide proof that you were resident at that address before the closing date, your application will be assessed from that address.

- **I move after the closing date but before National Offer Day?** If you move after the closing date but before National offer day, we will initially re-assess your application from your old address to see if you would still have been offered this place. Once the decisions have been made on National Offer Day we will update your address for waiting list purposes if we haven't been able to offer you your preferred school.
- **I move to a new address after National Offer Day?** If you change address after the National Offer Day, but want to keep the place at the school we have offered you, we will re-assess your application from your new address to see if you would still have been offered the place and let you know the decision.
IMPORTANT: We measure distances from home to school by straight line using national Ordnance Survey Set Points, if you move further away than the last person offered, we may have to withdraw the school place.
- **I own more than one property?** If you also own a property within 20 miles of the school(s) stated on your application form, the property closer to the school may not be accepted even if the other property is rented out to somebody else. If this information is insufficient, or inconclusive, the Council can request further information.
- **I am new to the City?** If you move into the city and cannot show proof as above, the residency will be calculated using the furthest point to the city boundary from the school applied for.

Admission criteria if a community school is oversubscribed

The Council is the admissions authority for community schools. We give priority for school places to children whose parents have applied for a place by **15 January 2025** at the school they would like their child to attend. These schools do not always have enough places available for every child whose parents have applied for a place. If this happens, we have to use an order of priority for admissions to all community schools in Derby. These are called our 'admissions criteria' and is set out on page 16.

We will add any unsuccessful preference, ranked higher than the offered place, onto a waiting list. We will set up waiting lists on **16 April 2025** and will keep them going until the end of the Autumn Term. After this date, the Council will keep waiting lists of children who have still not been offered places for

community and voluntary controlled schools. Foundation, free, academy and voluntary aided schools do not have to keep a waiting list, so you will need to check with those schools that they will carry on keeping the list. We will rank children on all waiting lists according to the order of priority used for the first round of allocations. This ranking will change as new pupils go onto, or come off a waiting list. We will add any applications we receive after the closing date to the waiting list, using the rank order on page 16.

Are admission arrangements different for Free, Academy, Trust and Foundation schools? Yes, because arrangements for admission to these schools, and the decisions about which children are offered a place, are the responsibility of the school governors. If you want your child to attend a trust, foundation, free, academy school, you should include it on the Common Application Form that you can get from the Council or the school.

If the school is over-subscribed, then the school governors will look at the applications and use their own admissions criteria - the things they take into account to make their decisions. The list at the back of the booklet gives figures for the number of applications received last year and the number of places at each school with some other statistics. We will write to you, on behalf of the governors at the school informing you of their decision. If your child's application is refused, we will explain how you can appeal in the letter.

Transfer between nursery, infant and junior school

If your child is going from a Foundation 1 nursery class, you will need to fill in the Common Application Form - even if your child already attends a nursery class attached to an infant or primary school. Children do not automatically transfer from their nursery school. If your child is going from an infant school to a junior school, you will need to fill in the Common Application Form in the same way. Children do not automatically transfer from their infant school to the partner junior school. If your child attends a primary school, they can continue from infant into junior education.

Admission arrangements for independent schools

You should write to the school directly for admissions information. **Please note: We do not give financial help to parents of children attending independent schools.**

Castleward Spencer Academy The new primary school on the Castleward housing development opened in September 2021, called Castleward Spencer Academy. The school is located on Canal Street, to the South of Derby City Centre. The school has an admission number of 30 and is opening up on a phased basis, year by year. The final capacity of the school will be 210 places, plus a 26 place nursery.

Oak Grange Primary Academy

A new primary school with nursery provision, opened in September 2023 on the Snelsmoor Grange housing development. The development is accessed off Field Lane, Alvaston, Derby. 45 Reception places were available in September 2023 and the school will open on a phased basis year by year, until all year groups are open in September 2029.

Applications from Overseas

Parents can apply for a school place at a Derby school whilst still living overseas but need to give the overseas address the child is living at the time of the application and not an address where the child is expected to live at. Parents then need to advise us when the child has arrived to take up permanent residence in the UK and let us know the new Derby address. It is the responsibility of parents to check that their children have a right under their visa entry conditions, to study at a school. Schools are required to see evidence at the time of enrolment and will advise what documentation they will need to see. Those moving to Derby mid-term during the school year, need to apply about three weeks before the school place would be needed.



Appeals

In many cases, schools will be able to meet all applications for admission. Some schools, however, may have to turn down some applications if the number of children seeking a place is above their admissions limit. If your child is turned down from the school that you prefer, you will be told this in the letter that we send on **16 April 2025**.

You should contact the Admissions Team on **01332 642730** or email primary.admissions@derby.gov.uk for advice and information on other schools. The letter will also give information about how you can appeal against the decision if, after discussing the issue with the Council, you are unhappy with the other school we offer you. The rules covering parental preference and appeals apply only to children above the age of five or, if the school usually takes younger children, above the age of four years. By law, infant classes must not have more than 30 pupils, except for limited exceptions.

Where children are refused admission for this reason, the Independent Appeal Panel is limited by law. It may only uphold an appeal if it considers that the decision was unreasonable or that the admission arrangements were not carried out properly and the child would otherwise have been offered a place. If you appeal on the grounds of 'unreasonableness' you must have mentioned all your reasons for your preferred school on your original application form. If you want to appeal against a decision not to admit your child to a community school, you must fill in an Appeal Form and return it to the Council.

How do I appeal?

Academy, Foundation, Free and Trust Schools

- You need to contact the school direct to make an appeal for one of these schools.

Community schools

- You can appeal for a **Community School** online at derby.gov.uk/education-and-learning/schools-and-colleges/ under the heading 'School Admissions'.
- For primary admissions in the next school year, you should submit your appeal by the date on the letter or email we sent you telling you of our decision.

- For admissions or transfers at other times of the year, you should submit the Appeal to the Council within 30 days of its receipt.
- An Independent Appeal Panel will consider your case. This meets specially to look at your appeal, although the Panel may hear a number of individual cases in turn at the same meeting. The Panel normally meets during the summer term for September admissions, or as soon as they can be arranged at other times.
- The Council's Corporate Resources Directorate will tell you about the time and place of the appeal hearing.
- The hearings are usually held in private. You can ask a friend to come with you or you can arrange for someone to come on your behalf.
- You, or your representative, will be given the opportunity to speak in support of the case. The Council's Corporate Resources Directorate will write and tell you the Panel's final decision.
- This decision must be accepted by all parties as the Panel's decision is binding. The Council, City Councillors or Members of Parliament cannot change the decision.
- We won't consider a further appeal for the same school in the same academic year, unless there are significant and material changes in your circumstances or those of the school.
- For those who apply to start school or are transferring from an infant school to a junior school, appeals will be heard within 40 school days of the closing date for appeals to be logged. For all other appeals, hearings will take place within 30 school days of the appeal being logged.

Transport

When will the Council help with transport?

Most parents choose a school for their child within walking distance of their home. The walking distance is given in law as:

- two miles for children under eight years old
- three miles for children aged eight and over.

However, if your child is eligible for Free School Meals with the Pupil Premium, or you are in receipt of the maximum level of Working Tax Credit or Universal Credit equivalent, the walking distance will remain at two miles until your child moves to Secondary School. Proof of these benefits will be required.

We measure the distance by the shortest available route. There may be exceptions to this if the Council decides the route to the school is dangerous for an accompanied child to walk. We issue bus passes or refunds, where appropriate, and we arrange special contract transport if public transport is not available. If your child is attending school full-time, but has no school within walking distance of your home which we can arrange for them to attend, we will help with transport to the nearest suitable school, excluding nursery schools. We will give this help up to the end of compulsory school age - this is the end of the school year in which your child reaches the age of 16.

If you choose to send your child to a school which is further away, even though we can make arrangements for them at a school within walking distance, we will not normally provide help with transport. We may give transport on medical grounds if medical proof comes with your request. If your child does not qualify for free transport, you are responsible for making travel arrangements to and from school.

Where can I get more information?

Contact the Admissions Team at the Council on **01332 642716** if you have any questions about whether your child qualifies for transport or about how to ask for a review of our decision. The Transport Policy can be read on-line by visiting derby.gov.uk. The Council's strategy for sustainable travel can also be viewed by visiting derby.gov.uk and search for sustainable travel.

Travelling to School

For advice on various options available including realistic cycling and walking distances to school, follow the link at derby.gov.uk. Pedestrian crossings have also been marked on the maps to help plan your journey. Some schools may have a school crossing patrol service or subway. Please encourage your child to use these. Children should also wear light or reflective clothing so they can be seen more easily. The maps also show cycle routes available in your area and most schools in Derby have cycle or scooter storage areas for use during the school day.

For information about cycle routes in Derby, please use the website www.cyclederby.co.uk.

Not everyone lives within reasonable walking or cycling distance to school, but there are other various options for you including:

- **Bus** - information on bus services can be found at www.traveline.info.
- **Car share** - share the cost and travel time with another family who live locally to you
- **Park and Stride** - drive to a convenient point inside the walking zone of the school and walk the last 10 - 15 minutes of your journey. This eases congestion outside school and is often easier to get away quicker than travelling all the way to school by car.

Other Information

Attending school

Parents must, by law, make sure their child receives 'sufficient and suitable' education once they reach compulsory school age.

Your child must go to school regularly to make satisfactory educational progress. Of course, your child may have to stay away if they are ill or for other reasons but they should only be off when it is absolutely essential. When your child is off, you must let the school know as soon as possible giving the reason.

Schools have to record in the register all of their pupils' absences. Every year, they also have to publish the absences that they have agreed to and where they are not agreed in the School Profile. They must also include in your child's yearly reports, the number of times your child has been absent without authority.

If you choose to send your child to a school, you must make sure he/she goes to school every day and arrives on time. The Council has a legal duty to see that you do this. If you want help, our Education Welfare Service can help you work through poor attendance. The Council sometimes takes legal action; if you're worried, ask for advice from the school or the Education Welfare Service on **01332 641448**. Help at an early stage is usually the best way forward.

Attendance regulations have removed the ability of Head teachers to authorise up to 10 days absence during term time. Family requests for Holidays/Leave of Absence for family weddings or

to see relatives are not deemed to be exceptional circumstances and the onus is always on the parents to provide evidence to support applications for leave of absence.

Unauthorised leave of absence in term time may result in a Penalty Notice being issued to each parent by the Education Welfare Service for each child taking unauthorised leave of absence. Children could lose their school place if parents take their children on extended holidays during term time.

For more information on school attendance contact the Education Welfare Service on **01332 641448**.

Pupil Referral Units

The Council is responsible for providing education to those children who have been excluded from school or who are without a school placement. The Behaviour Support Service delivers this education in pupil referral units. There are a number of places across Derby providing appropriate education at Key Stages 2 to 4.

We provide this in partnership with other agencies to offer a wider educational experience. The Council makes the decision to place a child in a pupil referral unit until we can find a school place. The child is referred for placement through the exclusion process or through the Behaviour Panel. The Pupil Referral Units also provide time-limited, part-time placements for children in danger of permanent exclusion from their mainstream school. At Key Stage 2, schools refer individual pupils, and the Council's Primary Support Forum approves the placements.

School milk

Primary schools give free school milk at lunch time for children who have a free school meal. It is also, sometimes, given on medical grounds.

School dress

This issue is for the school's governors to decide. The Council believes that any rules on school dress should take into account the cost, which is also contained in the Education and Inspections Act 2006. This Act says that the cost of a uniform at a school should not be too expensive.

Access to school records

You may see your child's educational records, which the school keeps, if you give the school enough notice. The school has to comply with data

protection laws and you should contact the Head Teacher of the school if you want to do this.

Child Health Department

We work closely with the Child Health Department to care for children's health during their school years. The Department's aim is to make sure children stay healthy and happy to benefit fully from their education. You will normally be told before medical and dental inspections take place. Each school has a 'named' nurse who visits regularly, as well as other health staff, to do routine health screening such as vision and hearing tests. You will always be told if there is any concern about your child's health. The Child Health Department can give you advice on health-related matters either through school or a home visit. You can contact the **Derbyshire Health Informatics, Child Health Department, 3rd Floor, Cardinal Square 10 Nottingham Road, Derby, DE1 3QT**. Telephone: **01332 868816**.

School Governors

Each school has a governing body which plays a key role in the life of the school. It has a general responsibility for the conduct of the school, the school finances and the appointment of staff. School governing bodies are made up of people from different groups, including parents, teachers and other staff, and people from the local and business community. In the case of aided schools, the Church appoints the majority of the governing body.

Annual School Prospectus

Schools produce their own prospectus, which must include information about special educational needs and what they provide for disabled people.

Are you interested in becoming a governor? We are always keen to recruit more governors. If you:

- would like to be more involved with the education of children.
- enjoy a challenging and rewarding role want to contribute to your local community.

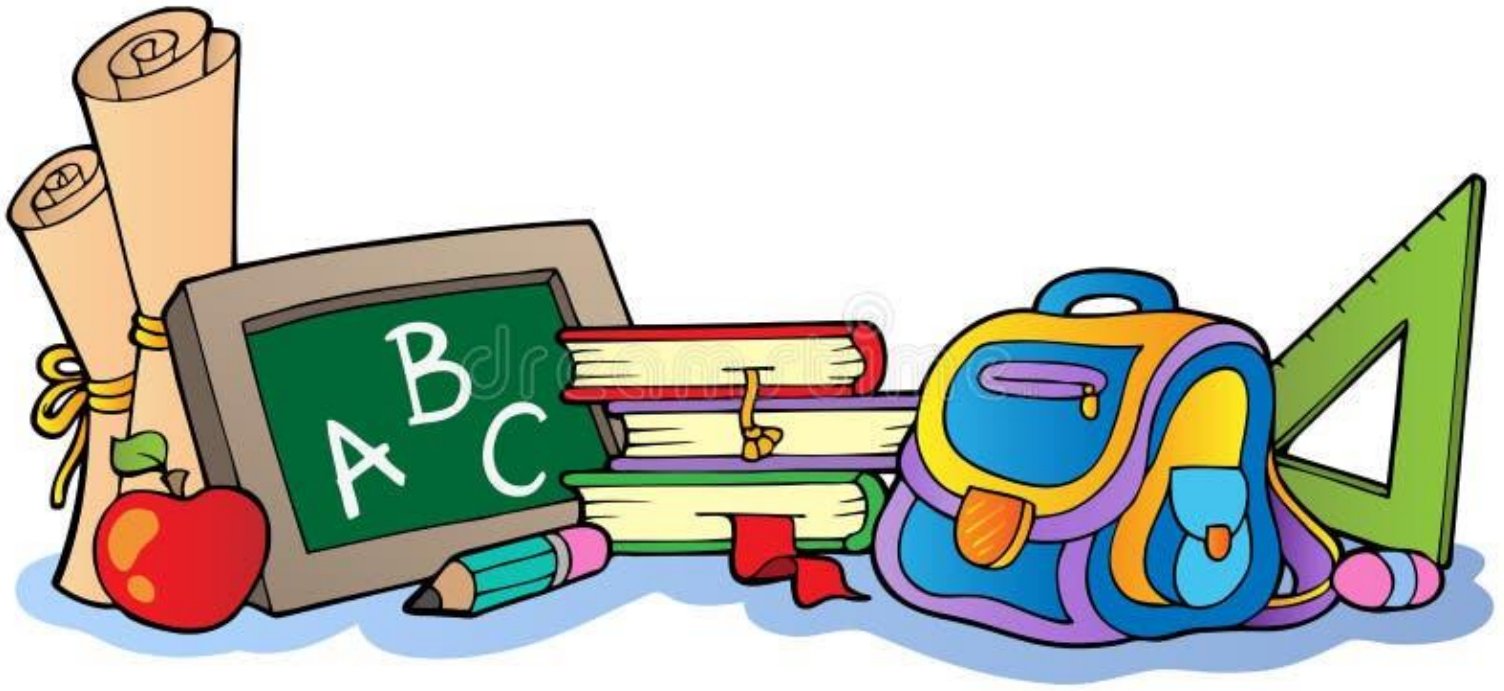
You would be an ideal governor. There are different types of governors.

For information about becoming:
an Authority governor - contact the Council on **01332 640364** or email governorenquiries@derby.gov.uk

We currently have vacancies for LA governors

- a governor at an aided school, contact the relevant diocesan authority - see page 3.
- a parent governor or community governor, contact the school.

The People Services Directorate can also give you information about being a governor and we have information for governors on our website at derby.gov.uk/schoolgovernors



Admission Policies in Derby

Admission policy for community and some Academy schools

As the admissions authority, the Council gives priority to children whose parents have applied for a place, by **15 January 2025**, at the school they would like their child to attend. Where Community schools do not have enough places available for every child whose parents have applied for a place, we have to use the following order of priority for admissions.

1. A 'looked after child' or a child who was previously looked after but immediately after being looked after became subject to an adoption, child arrangements, or special guardianship order. A looked after child is a child who is (a) in the care of a local authority, or (b) being provided with accommodation by a local authority in the exercise of their social services functions (see the definition in section 22(1) of the Children Act (1989).
2. Children who are both living in the catchment area served by the school and have brothers or sisters* of compulsory school age still attending the school at the time of their admission.
3. Other children living in the catchment area at the time of admission.
4. Children who do not live in the catchment area served by the school but who have brothers or sisters* of compulsory school age attending the school at the time of their admission.
5. Other children whose parents have requested a place.
6. Children whose parents did not request a place by **15 January 2025**.

For the purposes of admissions, we class a brother or sister as having:

- one or both natural parents in common
- are related by a parent's marriage or are adopted or fostered.

Note: A brother or sister must be living at the same address. Cousins are not classed as brothers or sisters.

Tie-breaker: When choices have to be made between children satisfying the same criteria, children living nearest to the school measured by a straight line have priority. The line will be measured from the centre of the home address to the school using the national Ordnance Survey set points. If

two measurements are the same, we will give priority to the child living nearest the school measured by the shortest walking route from the home address to the school's main entrance. In the unlikely event the two walking routes measure the same distance, the place will be allocated using an independently verified random allocation process. The 'home address' is the address of the primary carer of the child, as shown by who receives the Child Benefit.

We will give pupils who have an Education Health and Care Plan priority admission over all others.

The Council will keep a waiting list of children who have not been offered places at community schools. We will rank the children according to the order of priority that we use when schools first allocate places as we outline above. This ranking will change as new pupils go on to, or come off, the waiting list. Outside the normal admission round, first priority will be given within categories 2-5 to pupils who have not been on a city school roll during the academic year of application.

Applications will be dealt with using the address where the child resides at the closing date. Reassessment of any new address will then be made after provisional offers have been decided. If you do move out of your local school's catchment area after the closing date and before your child is due to start there, contact the Admissions Team to check if the school can still offer your child a place.

Admissions Policies for foundation, trust, some academies and free primary schools

Where these schools have a different oversubscription criteria to the one shown on this page, we give a summary alongside their entry below. For full details, please contact the school and ask for a copy of the school prospectus. You have a right of appeal if your child is refused a place. You should contact the school directly to appeal. They will then set a date for an Appeals Tribunal. The criteria each governing body takes into account only apply if the school is oversubscribed.

Community Schools

Alvaston Infant and Nursery School

Elvaston Lane, Alvaston, Derby DE24 0PU Telephone: 571704 Headteacher: Miss M Allen

Session times: 8.45am - 3.15pm

School Details

Age Range	No of Nursery Places	Open Evening	Where is Uniform available from?	Does the school maintain a waiting list after the first term?
3-7	52 FT/104 PT	Contact the School	Uniform Direct	Yes

Accessibility

Disabled Parking	Basic Wheelchair Access into Main School Building	Basic Wheelchair Access into all Buildings on site	Disabled Toilet	Hygiene Room inc changing bed/shower
Yes	Yes	Yes	Yes	No

Offers

Intake	Admissions Limit	Number of applications	Offers	SEN	Children Looked after	Catchment area Sibling	Catchment Area	Out of Area Sibling	Out of area	Allocated	Applications refused	Appeals lodged	Appeals allowed
2022	90	145	77	0	0	4	25	10	38	0	0	NA	NA
2023	90	160	90	1	0	5	37	7	40	0	10	4	0
2024	90	146	87	0	1	6	28	4	48	0	0	N/A	N/A

Admissions Limit: 90

Furthest distance offered: 2.545 miles

Ashgate Primary School

Ashbourne Road, Derby DE22 3FS Telephone: 343928 Headteacher: Mr P Seargent

Session times: 8.45am - 3.20pm

School Details

Age Range	Open Evening	Where is Uniform available from?	Does the school maintain a waiting list after the first term?
5-11	Contact the School	Uniform Direct	Yes

Accessibility

Disabled Parking	Basic Wheelchair Access into Main School Building	Basic Wheelchair Access into all Buildings on site	Disabled Toilet	Hygiene Room inc changing bed/shower
Yes	Yes	Yes	Yes	No

Offers

Intake	Admissions Limit	Number of applications	Offers	SEN	Children Looked after	Catchment area Sibling	Catchment Area	Out of Area Sibling	Out of area	Allocated	Applications refused	Appeals lodged	Appeals allowed
2022	45	69	45	0	0	7	15	8	16	0	2	1	0
2023	45	83	45	0	0	5	21	7	12	0	4	1	0
2024	45	108	45	0	0	7	23	8	7	0	9	2	0

Admissions Limit: 45

Furthest distance offered: 0.431 miles

Community Schools

Becket Primary School

Monk Street, Derby DE22 3QB Telephone: 347595 Headteacher: Mrs A Guest

Session times: 8.55am - 3.30pm

School Details

Age Range	No of Nursery Places	Open Evening	Where is uniform available from?	Does the school maintain a waiting list after the first term?
3-11	26 FT/52 PT	Contact the school	From the school	Yes

Accessibility

Disabled Parking	Basic Wheelchair Access into Main School Building	Basic Wheelchair Access into all Buildings on site	Disabled Toilet	Hygiene Room inc changing bed/shower
Yes	Yes	NA	Yes	No

Offers

Intake	Admissions Limit	Number of applications	Offers	SEN	Children Looked after	Catchment area Sibling	Catchment Area	Out of Area Sibling	Out of area	Allocated	Applications refused	Appeals lodged	Appeals allowed
2022	30	67	30	0	0	8	12	4	6	0	16	2	0
2023	30	101	30	0	0	13	16	1	0	0	27	9	2
2024	30	116	30	2	0	10	18	0	0	0	31	10	0

Admissions Limit: 30

Furthest distance offered: 0.306 miles

Cavendish Close Infant School

Wood Road, Chaddesden, Derby DE21 4LY Telephone: 662239 Headteacher: Mrs C Diffin

Session times: 8.50am - 3.10pm

School Details

Age Range	No of Nursery Places	Open Evening	Where is uniform available from?	Does the school maintain a waiting list after the first term?
3-7	39 FT/78 PT	Contact the school	Morleys or School Office	Yes

Accessibility

Disabled Parking	Basic Wheelchair Access into Main School Building	Basic Wheelchair Access into all Buildings on site	Disabled Toilet	Hygiene Room inc changing bed/shower
Yes	Yes	Yes	Yes	No

Offers

Intake	Admissions Limit	Number of applications	Offers	SEN	Children Looked after	Catchment area Sibling	Catchment Area	Out of Area Sibling	Out of area	Allocated	Applications refused	Appeals lodged	Appeals allowed
2022	90	106	73	0	0	6	29	8	30	0	0	NA	NA
2023	90	101	78	0	2	5	33	7	29	2	0	NA	NA
2024	90	110	69	0	1	3	35	2	28	0	0	NA	NA

Admissions Limit: 90

Furthest distance offered: 2.102 miles

Community Schools

Dale Community Primary School (Federated with Stonehill Nursery)

Porter Road, Derby DE23 6NN Telephone: 760070 Headteacher: Mrs L Foster

Session times: 8.50am - 3.20pm

School Details

Age Range	Open Evening	Where is uniform available from?	Does the school maintain a waiting list after the first term?
5-11	Contact the school	School Office	Yes

Accessibility

Disabled Parking	Basic Wheelchair Access into Main School Building	Basic Wheelchair Access into all Buildings on site	Disabled Toilet	Hygiene Room inc changing bed/shower
Street Parking only	Restricted – no lift to upstairs classrooms	NA	Yes	No

Offers

Intake	Admissions Limit	Number of applications	Offers	SEN	Children Looked after	Catchment area Sibling	Catchment Area	Out of Area Sibling	Out of area	Allocated	Applications refused	Appeals lodged	Appeals allowed
2022	75	106	75	1	0	30	30	8	6	0	1	1	0
2023	75	109	71	0	0	23	32	7	7	2	0	NA	NA
2024	90	110	69	0	1	3	35	2	28	0	0	NA	NA

Admissions Limit: KS1: 75 KS2: 81

Furthest distance offered: 0.802 miles

Gayton Junior School (Federated with Ridgeway Infant School)

Gayton Avenue, Littleover, Derby DE23 1GA Telephone: 760372 Headteacher: Mrs J Hill Session times: 8.55am - 3.30pm

School Details

Age Range	Open Evening	Where is uniform available from?	Does the school maintain a waiting list after the first term?
7-11	Contact the school	Contact the school	Yes

Accessibility

Disabled Parking	Basic Wheelchair Access into Main School Building	Basic Wheelchair Access into all Buildings on site	Disabled Toilet	Hygiene Room inc changing bed/shower
Yes	Yes	NA	Yes	No

Offers

Intake	Admissions Limit	Number of applications	Offers	SEN	Children Looked after	Catchment area Sibling	Catchment Area	Out of Area Sibling	Out of area	Allocated	Applications refused	Appeals lodged	Appeals allowed
2022	90	139	90	2	0	14	37	9	28	0	21	10	0
2023	90	130	90	2	0	13	32	16	27	0	15	6	0
2024	90	127	90	5	1	8	29	19	28	0	9	1	0

Admissions Limit: 90

Furthest distance offered: 0.952 miles

Community Schools

Markeaton Primary School Enhanced Resource School

Bromley Street, Derby DE22 1HL Telephone: 347374 Headteacher: Mr I Johnson

Session times: 8.55am - 3.25pm

School Details

Age Range	Open Evening	Where is uniform available from?	Does the school maintain a waiting list after the first term?
5-11	Contact the school	Morleys	Yes

Accessibility

Disabled Parking	Basic Wheelchair Access into Main School Building	Basic Wheelchair Access into all Buildings on site	Disabled Toilet	Hygiene Room inc changing bed/shower
Yes	Yes	No – restricted Access to two classrooms	Yes	No

Offers

Intake	Admissions Limit	Number of applications	Offers	SEN	Children Looked after	Catchment area Sibling	Catchment Area	Out of Area Sibling	Out of area	Allocated	Applications refused	Appeals lodged	Appeals allowed
2022	60	92	49	0	0	9	17	6	17	0	0	NA	NA
2023	60	113	60	0	0	13	22	10	15	0	5	1	0
2024	60	131	59	0	0	9	29	7	14	0	0	NA	NA

Admissions Limit: 60

Furthest distance offered: 2.567 miles

Meadow Farm Primary School

Foyle Avenue, Chaddesden, Derby DE21 6TZ Telephone: 01332 662631 Headteacher: Mrs S Eyre

Session times: 8.50am - 3.15pm

School Details

Age Range	No of Nursery Places	Open Evening	Where is uniform available from?	Does the school maintain a waiting list after the first term?
3-11	26 FT/52 PT	Contact the school	Morley's School Outfitters, Chaddesden	Yes

Accessibility

Disabled Parking	Basic Wheelchair Access into Main School Building	Basic Wheelchair Access into all Buildings on site	Disabled Toilet	Hygiene Room inc changing bed/shower
Yes	Yes	Yes	Yes	No

Offers

Intake	Admissions Limit	Number of applications	Offers	SEN	Children Looked after	Catchment area Sibling	Catchment Area	Out of Area Sibling	Out of area	Allocated	Applications refused	Appeals lodged	Appeals allowed
2022	30	36	22	0	0	6	9	3	4	0	0	NA	NA
2023	30	26	15	0	0	2	7	4	1	1	0	NA	NA
2024	30	42	26	0	0	2	15	8	1	0	0	NA	NA

Admissions Limit: 30

Furthest distance offered: 2.546 miles

Community Schools

Mickleover Primary School

Vicarage Road, Mickleover, Derby DE3 OEY Telephone: 01332 514052 Headteacher: Mrs L Gerver

Session times: 8.55am - 3.20pm

School Details

Age Range	Open Evening	Where is uniform available from?	Does the school maintain a waiting list after the first term?
5-11	Contact the school	Contact the school	Yes

Accessibility

Disabled Parking	Basic Wheelchair Access into Main School Building	Basic Wheelchair Access into all Buildings on site	Disabled Toilet	Hygiene Room inc changing bed/shower
Yes	Yes	Yes	Yes	No

Offers

Intake	Admissions Limit	Number of applications	Offers	SEN	Children Looked after	Catchment area Sibling	Catchment Area	Out of Area Sibling	Out of area	Allocated	Applications refused	Appeals lodged	Appeals allowed
2022	60	151	60	0	1	0	9	15	35	0	0	NA	NA
2023	60	151	60	0	0	8	10	15	27	0	8	0	NA
2024	60	128	45	0	0	11	7	10	17	0	0	NA	NA

Admissions Limit: 60

Furthest distance offered: 2.78 miles

Oakwood Infant and Nursery School

Waldene Drive, Alvaston, Derby DE24 0GZ Telephone: 574192 Headteacher: Miss Deb Ward

Session times: 8.50am - 3.20pm

School Details

Age Range	No of Nursery Places	Open Evening	Where is uniform available from?	Does the school maintain a waiting list after the first term?
3-7	39 FT/78 PT	Contact the school	Uniform Direct	Yes

Accessibility

Disabled Parking	Basic Wheelchair Access into Main School Building	Basic Wheelchair Access into all Buildings on site	Disabled Toilet	Hygiene Room inc changing bed/shower
Yes	Yes – some restricted areas	Yes	Yes	No

Offers

Intake	Admissions Limit	Number of applications	Offers	SEN	Children Looked after	Catchment area Sibling	Catchment Area	Out of Area Sibling	Out of area	Allocated	Applications refused	Appeals lodged	Appeals allowed
2022	90	160	90	0	2	4	42	3	39	0	0	NA	NA
2023	90	170	89	0	1	8	40	2	37	1	0	NA	NA
2024	90	148	70	1	0	9	27	5	28	0	0	NA	NA

Admissions Limit: 90

Furthest distance offered: 2.059 miles

Community Schools

Parkview Primary School

Springwood Drive, Oakwood, Derby, DE21 2RQ Telephone: 835439 Exec Headteacher: Mrs J Calladine
Session times: 8.50am - 3.15pm

School Details

Age Range	No of Nursery Places	Open Evening	Where is uniform available from?	Does the school maintain a waiting list after the first term?
3-11	26 FT/52 PT	Contact the school	www.yourschooluniform.com	Yes

Accessibility

Disabled Parking	Basic Wheelchair Access into Main School Building	Basic Wheelchair Access into all Buildings on site	Disabled Toilet	Hygiene Room inc changing bed/shower
Yes	Yes	Yes	Yes	Yes

Offers

Intake	Admissions Limit	Number of applications	Offers	SEN	Children Looked after	Catchment area Sibling	Catchment Area	Out of Area Sibling	Out of area	Allocated	Applications refused	Appeals lodged	Appeals allowed
2022	30	102	30	0	1	6	5	9	9	0	24	4	0
2023	30	94	30	0	2	4	6	8	10	0	25	9	0
2024	30	83	30	0	0	4	4	5	17	0	14	0	NA

Admissions Limit: 30

Furthest distance offered: 0.404 miles

Pear Tree Infant School

Pear Tree Street, Derby DE23 8PN Telephone: 767244 Headteacher: Mrs B Suddhi
Session times: 8.50am - 3.20pm

School Details

Age Range	Open Evening	Where is uniform available from?	Does the school maintain a waiting list after the first term?
5-7	Contact the school	From the school	Yes

Accessibility

Disabled Parking	Basic Wheelchair Access into Main School Building	Basic Wheelchair Access into all Buildings on site	Disabled Toilet	Hygiene Room inc changing bed/shower
Yes – parking limited	Yes – some internal circulation restricted	Yes	Yes	No

Offers

Intake	Admissions Limit	Number of applications	Offers	SEN	Children Looked after	Catchment area Sibling	Catchment Area	Out of Area Sibling	Out of area	Allocated	Applications refused	Appeals lodged	Appeals allowed
2022	90	98	71	0	0	9	47	4	10	1	0	NA	NA
2023	90	89	58	0	0	10	35	1	11	1	0	NA	NA
2024	90	115	78	0	0	9	44	5	20	0	0	NA	NA

Admissions Limit: 90

Furthest distance offered: 1.065 miles

Community Schools

Portway Infant School

Woodlands Road, Allestree, Derby DE22 2HE Telephone: 550702 Headteacher: Miss L McSherry

Session times: 8.55am - 3.25pm

School Details

Age Range	Open Evening	Where is uniform available from?	Does the school maintain a waiting list after the first term?
3-7	Contact the school	Morleys or Loop Wear Ltd	Yes

Accessibility

Disabled Parking	Basic Wheelchair Access into Main School Building	Basic Wheelchair Access into all Buildings on site	Disabled Toilet	Hygiene Room inc changing bed/shower
Yes	Yes	Yes	Yes	No

Offers

Intake	Admissions Limit	Number of applications	Offers	SEN	Children Looked after	Catchment area Sibling	Catchment Area	Out of Area Sibling	Out of area	Allocated	Applications refused	Appeals lodged	Appeals allowed
2022	90	121	60	0	1	2	23	5	29	0	0	NA	NA
2023	90	113	47	0	1	1	23	0	22	0	0	NA	NA
2024	60	109	51	0	1	2	23	3	22	0	0	NA	NA

Admissions Limit: 60

Furthest distance offered: 0.514 miles

Ravensdale Infant and Nursery School

Devonshire Drive, Mickleover, Derby DE3 9HE Telephone: 513862 Headteacher: Mrs L Blanchenot

Session times: 8.55am - 3.20pm

School Details

Age Range	No of Nursery Places	Open Evening	Where is uniform available from?	Does the school maintain a waiting list after the first term?
3-7	26 FT/52 PT	Contact the school	Morleys; Uniform Direct; Tesco Online	Yes

Accessibility

Disabled Parking	Basic Wheelchair Access into Main School Building	Basic Wheelchair Access into all Buildings on site	Disabled Toilet	Hygiene Room inc changing bed/shower
Yes	Yes	Yes	Yes	No

Offers

Intake	Admissions Limit	Number of applications	Offers	SEN	Children Looked after	Catchment area Sibling	Catchment Area	Out of Area Sibling	Out of area	Allocated	Applications refused	Appeals lodged	Appeals allowed
2022	90	136	87	0	0	0	42	4	41	0	0	NA	NA
2023	90	131	78	0	0	7	27	3	37	4	0	NA	NA
2024	90	124	72	0	0	10	32	4	26	0	0	NA	NA

Admissions Limit: 90

Furthest distance offered: 2.729 miles

Community Schools

Redwood Primary School

Redwood Road, Sinfin, Derby DE24 9PG Telephone: 767443 Headteacher: Mrs L Shepherd

Session times: 8.55am - 3.10pm

School Details

Age Range	No of Nursery Places	Open Evening	Where is uniform available from?	Does the school maintain a waiting list after the first term?
3-11	50 FT/100 PT	Contact the school	Morleys or Uniform Direct	Yes

Accessibility

Disabled Parking	Basic Wheelchair Access into Main School Building	Basic Wheelchair Access into all Buildings on site	Disabled Toilet	Hygiene Room inc changing bed/shower
Yes	Yes	Yes	Yes	No

Offers

Intake	Admissions Limit	Number of applications	Offers	SEN	Children Looked after	Catchment area Sibling	Catchment Area	Out of Area Sibling	Out of area	Allocated	Applications refused	Appeals lodged	Appeals allowed
2022	90	133	84	0	0	12	13	30	29	0	0	NA	NA
2023	90	101	65	0	0	12	16	12	24	1	0	NA	NA
2024	90	98	67	0	1	13	10	20	23	0	0	NA	NA

Admissions Limit: 90

Furthest distance offered: 5.809 miles

Ridgeway Infant School (Federated with Gayton Junior School)

Uplands Avenue, Littleover, Derby, DE23 1GG Telephone: 760770 Headteacher: Mrs T Dale

Session times: 8.55am - 3.25pm

School Details

Age Range	Open Evening	Where is uniform available from?	Does the school maintain a waiting list after the first term?
5-7	Contact the school	Loop Wear Ltd	Yes

Accessibility

Disabled Parking	Basic Wheelchair Access into Main School Building	Basic Wheelchair Access into all Buildings on site	Disabled Toilet	Hygiene Room inc changing bed/shower
Yes	Yes	Yes	Yes	Yes – no shower

Offers

Intake	Admissions Limit	Number of applications	Offers	SEN	Children Looked after	Catchment area Sibling	Catchment Area	Out of Area Sibling	Out of area	Allocated	Applications refused	Appeals lodged	Appeals allowed
2022	90	143	90	0	0	9	33	13	35	0	4	3	0
2023	90	169	90	0	0	6	38	9	37	0	10	2	0
2024	90	136	73	0	0	3	27	3	40	0	0	NA	NA

Admissions Limit: 90

Furthest distance offered: 1.023 miles

Community Schools

Roe Farm Primary School

Worcester Crescent, Chaddesden, Derby DE21 4HG Telephone: 346310 Headteacher: Mrs H Weston

Session times: 8.45am - 3.15pm

School Details

Age Range	No of Nursery Places	Open Evening	Where is uniform available from?	Does the school maintain a waiting list after the first term?
3-11	39 FT/78 PT	Contact the school	From the school	Yes

Accessibility

Disabled Parking	Basic Wheelchair Access into Main School Building	Basic Wheelchair Access into all Buildings on site	Disabled Toilet	Hygiene Room inc changing bed/shower
Yes	Yes	Yes	Yes	Yes – no shower

Offers

Intake	Admissions Limit	Number of applications	Offers	SEN	Children Looked after	Catchment area Sibling	Catchment Area	Out of Area Sibling	Out of area	Allocated	Applications refused	Appeals lodged	Appeals allowed
2022	60	61	48	0	1	11	12	14	10	0	0	NA	NA
2023	60	52	36	0	0	6	10	17	3	0	0	NA	NA
2024	60	52	36	1	0	8	7	12	8	0	0	NA	NA

Admissions Limit: 60

Furthest distance offered: 1.408 miles

Rosehill Infant and Nursery School

Reginald Street DE23 8FQ Telephone: 229229 Headteacher: Mrs H Kelk

Session times: 8.55am - 3.20pm

School Details

Age Range	No of Nursery Places	Open Evening	Where is uniform available from?	Does the school maintain a waiting list after the first term?
2-7	39 FT/78 PT	Contact the school	From the school	Yes

Accessibility

Disabled Parking	Basic Wheelchair Access into Main School Building	Basic Wheelchair Access into all Buildings on site	Disabled Toilet	Hygiene Room inc changing bed/shower
Street parking only	Yes – restricted access to upstairs classrooms and no lift	NA	Yes	No

Offers

Intake	Admissions Limit	Number of applications	Offers	SEN	Children Looked after	Catchment area Sibling	Catchment Area	Out of Area Sibling	Out of area	Allocated	Applications refused	Appeals lodged	Appeals allowed
2022	50	58	35	0	0	4	25	0	6	0	0	NA	NA
2023	50	69	41	0	0	8	22	3	8	0	0	NA	NA
2024	50	64	40	0	0	5	24	1	10	0	0	NA	NA

Admissions Limit: 50

Furthest distance offered: 3.468 miles

Community Schools

Shelton Infant School

Carlton Avenue, Shelton Lock, Derby DE24 9EJ Telephone: 700353 Headteacher: Mr A Leigh

Session times: 9am - 3.20pm

School Details

Age Range	No of Nursery Places	Open Evening	Where is uniform available from?	Does the school maintain a waiting list after the first term?
3-7	26 FT/52 PT	Contact the school	Uniform Direct	Yes

Accessibility

Disabled Parking	Basic Wheelchair Access into Main School Building	Basic Wheelchair Access into all Buildings on site	Disabled Toilet	Hygiene Room inc changing bed/shower
Yes	Yes	NA	Yes	Yes

Offers

Intake	Admissions Limit	Number of applications	Offers	SEN	Children Looked after	Catchment area Sibling	Catchment Area	Out of Area Sibling	Out of area	Allocated	Applications refused	Appeals lodged	Appeals allowed
2022	70	106	61	0	1	4	29	4	23	0	0	NA	NA
2023	70	86	57	0	1	5	23	2	26	0	0	NA	NA
2024	70	90	56	0	0	6	28	3	19	0	0	NA	NA

Admissions Limit: 70

Furthest distance offered: 1.856 miles

Silverhill Primary School

Draycott Drive, Mickleover, Derby DE3 0QE Telephone: 511138 Headteacher: Mr S Burley

Session times: 8.50am - 3.30pm

School Details

Age Range	Open Evening	Where is uniform available from?	Does the school maintain a waiting list after the first term?
5-11	Contact the school	Morleys and Uniform Direct	Yes

Accessibility

Disabled Parking	Basic Wheelchair Access into Main School Building	Basic Wheelchair Access into all Buildings on site	Disabled Toilet	Hygiene Room inc changing bed/shower
Yes	Yes	Yes	Yes	Yes

Offers

Intake	Admissions Limit	Number of applications	Offers	SEN	Children Looked after	Catchment area Sibling	Catchment Area	Out of Area Sibling	Out of area	Allocated	Applications refused	Appeals lodged	Appeals allowed
2022	60	163	60	0	0	8	15	18	19	0	20	2	0
2023	60	163	60	0	0	11	15	16	18	0	31	4	0
2024	60	130	60	0	1	11	11	9	28	0	7	2	0

Admissions Limit: 60

Furthest distance offered: 1.191 miles

Community Schools

Wren Park Primary School

Jackson Avenue, Mickleover, Derby DE3 9AY Telephone: 512732 Headteacher: Mr A Buckley

Session times: 9am - 3.30pm

School Details

Age Range	Open Evening	Where is uniform available from?	Does the school maintain a waiting list after the first term?
5-11	Contact the school	Uniform Direct	Yes

Accessibility

Disabled Parking	Basic Wheelchair Access into Main School Building	Basic Wheelchair Access into all Buildings on site	Disabled Toilet	Hygiene Room inc changing bed/shower
Yes	Yes	No – restricted	Yes	No

Offers

Intake	Admissions Limit	Number of applications	Offers	SEN	Children Looked after	Catchment area Sibling	Catchment Area	Out of Area Sibling	Out of area	Allocated	Applications refused	Appeals lodged	Appeals allowed
2022	54	167	54	0	0	20	22	4	8	0	32	6	0
2023	54	141	54	0	0	12	12	6	14	0	14	2	0
2024	54	88	41	0	0	12	11	4	14	0	0	NA	NA

Admissions Limit: 54

Furthest distance offered: 8.268 miles

Map of schools in Derby

Key

Primary Schools ▲

Nursery Schools ★

Special Schools ●

Academy

The governors of the school are the admission authority

Community

Derby City Council is the admission authority

Foundation

The governors of the school are the admission authority

Free Schools

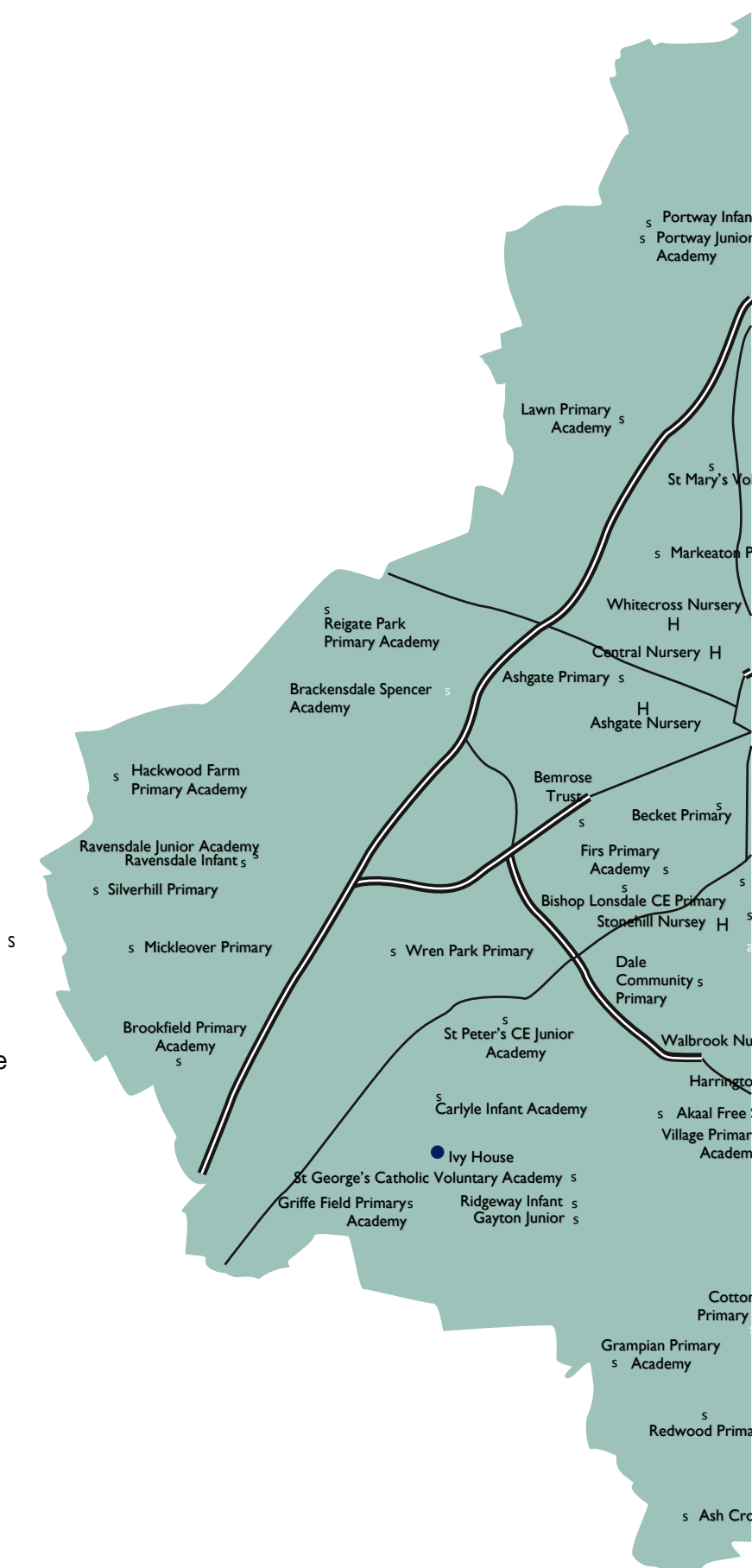
The governors of the school are the admission authority.

Trust Schools

The governors of the school are the admission authority.

Voluntary Aided Schools The governors of the school are the admissions authority

On the map all schools are Community unless otherwise indicated.





Reproduced from the Ordnance Survey mapping with the permission of the Controller of Her Majesty's Stationary Office. © Crown Copyright. Unauthorised reproduction infringes Crown copyright and may lead to prosecution or civil proceedings

Derby City Council Licence No. 100024913 (2006)

The following schools follow the Over-subscription Criteria set out on page 17

Academy Schools

Allenton Primary School

Brookhouse Street, Allenton, Derby DE24 9BB Telephone: 701144 Headteacher: Mrs J Trowsdale

Session times: 8.45am - 3.30pm

School Details

Age Range	Open Evening	Where is uniform available from?	Does the school maintain a waiting list after the first term?
5-11	Contact the school	From the school	Yes

Accessibility

Disabled Parking	Basic Wheelchair Access into Main School Building	Basic Wheelchair Access into all Buildings on site	Disabled Toilet	Hygiene Room inc changing bed/shower
Yes	Yes	No – restricted	Yes	Yes – shower but no changing bed

Offers

Intake	Admissions Limit	Number of applications	Offers	SEN	Children Looked after	Catchment area Sibling	Catchment Area	Out of Area Sibling	Out of area	Allocated	Applications refused	Appeals lodged	Appeals allowed
2022	60	47	32	1	0	6	5	8	12	0	0	NA	NA
2023	60	57	36	0	1	10	4	10	11	0	0	NA	NA
2024	60	52	26	0	0	1	5	8	12	0	0	NA	NA

Admissions Limit: 60

Furthest distance offered: 3.283 miles

Alvaston Junior Academy Enhanced Resource School

Elvaston Lane, Alvaston, Derby DE24 0PU Telephone: 571321 Principal: Mr A Dunn

Session times: 8.50am - 3.20pm

School Details

Age Range	Open Evening	Where is uniform available from?	Does the school maintain a waiting list after the first term?
7-11	Contact the school	www.ahyde.co.uk	Yes

Accessibility

Disabled Parking	Basic Wheelchair Access into Main School Building	Basic Wheelchair Access into all Buildings on site	Disabled Toilet	Hygiene Room inc changing bed/shower
Yes	Yes	NA	Yes	No

Offers

Intake	Admissions Limit	Number of applications	Offers	SEN	Children Looked after	Catchment area Sibling	Catchment Area	Out of Area Sibling	Out of area	Allocated	Applications refused	Appeals lodged	Appeals allowed
2022	90	116	90	0	1	10	19	21	39	0	3	3	1
2023	90	97	76	1	1	10	21	15	28	0	0	NA	NA
2024	90	101	82	2	0	24	25	1	26	4	0	NA	NA

Admissions Limit: 90

Furthest distance offered: 4.581 miles

Arboretum Primary School

Corden Street, Derby DE23 8GP Telephone: 291140 Headteacher: Ms H Phillips

Session times: 8.55am - 3.15pm

School Details

Age Range	No of Nursery Places	Open Evening	Where is uniform available from?	Does the school maintain a waiting list after the first term?
2-11	39 FT/ 78 PT	Contact the school	From the school	Yes

Accessibility

Disabled Parking	Basic Wheelchair Access into Main School Building	Basic Wheelchair Access into all Buildings on site	Disabled Toilet	Hygiene Room inc changing bed/shower
Yes	Yes	No – restricted	Yes	Yes

Offers

Intake	Admissions Limit	Number of applications	Offers	SEN	Children Looked after	Catchment area Sibling	Catchment Area	Out of Area Sibling	Out of area	Allocated	Applications refused	Appeals lodged	Appeals allowed
2022	75	155	75	0	1	7	16	27	24	0	15	6	0
2023	75	142	75	0	0	8	3	20	44	0	6	6	0
2024	75	182	75	0	0	7	7	31	30	0	13	3	0

Admissions Limit: 75

Furthest distance offered: 1.069 miles

Academy and Trust Schools

Ashwood Spencer Academy

Amber Street, Derby DE24 8FT Telephone: 348356 Principal: Ms P Baines-Chambers

Session times: Infants 8.50am - 3.15pm, Juniors 8.45am - 3.20pm

School Details

Age Range	No of Nursery Places	Open Evening	Where is uniform available from?	Does the school maintain a waiting list after the first term?
3-11	52 FT/104 PT	Contact the school	Uniform Direct	Yes

Accessibility

Disabled Parking	Basic Wheelchair Access into Main School Building	Basic Wheelchair Access into all Buildings on site	Disabled Toilet	Hygiene Room inc changing bed/shower
Yes	Yes	NA	Yes	Yes

Offers

Intake	Admissions Limit	Number of applications	Offers	SEN	Children Looked after	Catchment area Sibling	Catchment Area	Out of Area Sibling	Out of area	Allocated	Applications refused	Appeals lodged	Appeals allowed
2022	90	73	56	0	0	31	18	3	4	0	0	NA	NA
2023	90	97	73	0	0	29	28	10	6	0	0	NA	NA
2024	75	182	75	0	0	7	7	31	30	0	13	3	0

Admissions Limit: 90

Furthest distance offered: 2.029 miles

Ash Croft Primary Academy

Deep Dale Lane, Sinfin, Derby DE24 3HF Telephone: 764160 Principal: Ms E Luff

Session times: Reception to Year 2: 8.45m - 3.15pm, Years 3 to 6: 8.50am - 3.20pm

School Details

Age Range	No of Nursery Places	Open Evening	Where is uniform available from?	Does the school maintain a waiting list after the first term?
3-11	26 FT/52 PT	Contact the school	www.ahyde.co.uk	Yes

Accessibility

Disabled Parking	Basic Wheelchair Access into Main School Building	Basic Wheelchair Access into all Buildings on site	Disabled Toilet	Hygiene Room inc changing bed/shower
Yes	Restricted – internal circulation difficult	Restricted	Yes	No

Offers

Intake	Admissions Limit	Number of applications	Offers	SEN	Children Looked after	Catchment area Sibling	Catchment Area	Out of Area Sibling	Out of area	Allocated	Applications refused	Appeals lodged	Appeals allowed
2022	40	31	14	0	0	6	4	2	2	0	0	NA	NA
2023	40	28	17	0	0	4	4	2	7	0	0	NA	NA
2024	40	36	24	1	0	0	10	3	10	0	0	NA	NA

Admissions Limit: 40

Furthest distance offered: 2.851 miles

The Bemrose All-Through School (Trust School)

Uttoxeter New Road, DE22 3HU Telephone: 366711 Executive Headteacher: Mr N Wilkinson

Session times: 8.40am - 3.15pm

School Details

Age Range	No of Nursery Places	Open Evening	Where is uniform available from?	Does the school maintain a waiting list after the first term?
5-11	Contact the school	Contact the school	Uniform Direct	Yes

Accessibility

Disabled Parking	Basic Wheelchair Access into Main School Building	Basic Wheelchair Access into all Buildings on site	Disabled Toilet	Hygiene Room inc changing bed/shower
Yes	Yes	Yes	Yes	Yes – in Primary

Intake	Admissions Limit	Number of applications	Offers	SEN	Children Looked after	Catchment area Sibling	Catchment Area	Out of Area Sibling	Out of area	Allocated	Applications refused	Appeals lodged	Appeals allowed
2022	60	69	44	0	0	11	26	4	3	0	0	NA	NA
2023	60	75	42	0	0	13	19	2	3	5	0	NA	NA
2024	60	97	48	0	0	13	28	1	5	1	0	NA	NA

Admissions Limit: 60

Furthest distance offered: 1.926 miles

Academy Schools

Brackensdale Spencer Academy Enhanced Resource School

Walthamstow Drive, Derby DE22 4BS Telephone: 348314 Principal: Mrs J McGregor

Session times: 8.55am - 3.15pm

School Details

Age Range	No of Nursery Places	Open Evening	Where is uniform available from?	Does the school maintain a waiting list after the first term?
5-11	52 FT/26 PT	Contact the school	From the school	Yes

Accessibility

Disabled Parking	Basic Wheelchair Access into Main School Building	Basic Wheelchair Access into all Buildings on site	Disabled Toilet	Hygiene Room inc changing bed/shower
Yes	Yes	Yes	Yes	No

Offers

Intake	Admissions Limit	Number of applications	Offers	SEN	Children Looked after	Catchment area Sibling	Catchment Area	Out of Area Sibling	Out of area	Allocated	Applications refused	Appeals lodged	Appeals allowed
2022	60	82	57	4	1	10	14	13	15	0	0	NA	NA
2023	60	80	45	2	0	9	15	11	7	1	0	NA	NA
2024	60	78	51	1	1	14	16	11	8	0	0	NA	NA

Admissions Limit: 60

Furthest distance offered: 3.130 miles

Breadsall Hill Top Primary School

St Andrew's View, Derby DE21 4ET Telephone: 345131 Headteacher: Mr M Lawrence

Session times: 8.50am - 3.15pm

School Details

Age Range	No of Nursery Places	Open Evening	Where is uniform available from?	Does the school maintain a waiting list after the first term?
3-7	30 FT/60 PT	Contact the school	From the school	Yes

Accessibility

Disabled Parking	Basic Wheelchair Access into Main School Building	Basic Wheelchair Access into all Buildings on site	Disabled Toilet	Hygiene Room inc changing bed/shower
Yes	Yes	Restricted	Yes	No

Offers

Intake	Admissions Limit	Number of applications	Offers	SEN	Children Looked after	Catchment area Sibling	Catchment Area	Out of Area Sibling	Out of area	Allocated	Applications refused	Appeals lodged	Appeals allowed
2022	60	63	38	0	0	4	9	13	12	0	0	NA	NA
2023	60	73	53	0	0	13	8	13	17	2	0	NA	NA
2024	60	68	42	0	0	13	10	6	13	0	0	NA	NA

Admissions Limit: 60

Furthest distance offered: 1.324 miles

Academy Schools

Brookfield Primary School

The Hollow, Mickleover, Derby DE3 0BW Telephone: 516459 Executive Headteacher: Mrs L J Bird

Head of School: Mrs K Smith

Session times: 8.55am - 3.30pm

School Details

Age Range	No of Nursery Places	Open Evening	Where is uniform available from?	Does the school maintain a waiting list after the first term?
3-11	26 FT/52 PT	Contact the school	Tesco, Uniform Direct and Morleys	Yes

Accessibility

Disabled Parking	Basic Wheelchair Access into Main School Building	Basic Wheelchair Access into all Buildings on site	Disabled Toilet	Hygiene Room inc changing bed/shower
Yes	Restricted – sloping site issues	Yes	Yes	No

Offers

Intake	Admissions Limit	Number of applications	Offers	SEN	Children Looked after	Catchment area Sibling	Catchment Area	Out of Area Sibling	Out of area	Allocated	Applications refused	Appeals lodged	Appeals allowed
2022	30	123	30	0	0	6	14	4	6	0	14	6	0
2023	30	125	30	0	0	8	17	5	0	0	26	10	0
2024	30	102	30	0	2	5	20	1	2	0	11	Contact School	Contact School

Admissions Limit: 30

Furthest distance offered: 0.657 miles

Carlyle Infant and Nursery Academy

Carlisle Avenue, Littleover, Derby DE23 3ES Telephone: 760369 Principal: Mrs S Curtis

Session times: 8.55am - 3.15pm

School Details

Age Range	No of Nursery Places	Open Evening	Where is uniform available from?	Does the school maintain a waiting list after the first term?
3-7	26 FT/52 PT	Contact the school	Andrew Hyde Schoolwear	Yes

Accessibility

Disabled Parking	Basic Wheelchair Access into Main School Building	Basic Wheelchair Access into all Buildings on site	Disabled Toilet	Hygiene Room inc changing bed/shower
Yes	Yes	NA	Yes	Yes – in Primary School

Offers

Intake	Admissions Limit	Number of applications	Offers	SEN	Children Looked after	Catchment area Sibling	Catchment Area	Out of Area Sibling	Out of area	Allocated	Applications refused	Appeals lodged	Appeals allowed
2022	60	99	35	0	0	4	15	2	12	2	0	NA	NA
2023	60	125	57	0	1	3	23	3	22	5	0	NA	NA
2024	60	96	46	0	0	4	22	5	15	0	0	NA	NA

Admissions Limit: 60

Furthest distance offered: 1.708 miles

Academy Schools

Castleward Spencer Academy

New School Opened September 2021

Canal Street, DE1 2RJ Telephone: 949471 Headteacher: Mrs L Trail

Session times: 8.55am - 3.25pm

School Details

Age Range	Open Evening	Where is uniform available from?	Does the school maintain a waiting list after the first term?
Nursery, Reception and Years 1, 2, 3 & 4 - Sept 2025	Contact the school	Contact the school	Yes

Accessibility

Disabled Parking	Basic Wheelchair Access into Main School Building	Basic Wheelchair Access into all Buildings on site	Disabled Toilet	Hygiene Room inc changing bed/shower
Yes	Yes	NA	Yes	Yes

Offers

Intake	Admissions Limit	Number of applications	Offers	SEN	Children Looked after	Catchment area Sibling	Catchment Area	Out of Area Sibling	Out of area	Allocated	Applications refused	Appeals lodged	Appeals allowed
2022	30	20	15	0	1	1	7	0	6	0	0	NA	NA
2023	30	34	21	0	0	0	8	4	8	1	0	NA	NA
2024	30	57	30	0	0	6	10	4	10	0	6	1	0

Admissions Limit: 30

Furthest distance offered: 0.858 miles

Cavendish Close Junior Academy

Deborah Drive, Chaddesden, Derby DE21 4RJ Telephone: 672338 Principal: Mrs M Tagne

Session times: 8.50am - 3.15pm

School Details

Age Range	Open Evening	Where is uniform available from?	Does the school maintain a waiting list after the first term?
7-11	Contact the school	Tesco or Morleys	Yes

Accessibility

Disabled Parking	Basic Wheelchair Access into Main School Building	Basic Wheelchair Access into all Buildings on site	Disabled Toilet	Hygiene Room inc changing bed/shower
Yes	Yes	NA	Yes	Yes

Offers

Intake	Admissions Limit	Number of applications	Offers	SEN	Children Looked after	Catchment area Sibling	Catchment Area	Out of Area Sibling	Out of area	Allocated	Applications refused	Appeals lodged	Appeals allowed
2022	90	88	86	5	0	12	38	8	25	0	0	NA	NA
2023	90	71	71	1	1	14	24	6	25	0	0	NA	NA
2024	90	73	71	1	0	19	28	0	20	3	0	NA	NA

Admissions Limit: 90

Furthest distance offered: 1.155 miles

Academy Schools

Chaddesden Park Primary School

Carson Road, Chaddesden, Derby DE21 6JW Telephone: 662115 Headteacher: Mrs H Smith

Session times: 8.50am - 3.15pm

School Details

Age Range	No of Nursery Places	Open Evening	Where is uniform available from?	Does the school maintain a waiting list after the first term?
3-11	26 FT/52 PT	Contact the school	Morleys	Yes

Accessibility

Disabled Parking	Basic Wheelchair Access into Main School Building	Basic Wheelchair Access into all Buildings on site	Disabled Toilet	Hygiene Room inc changing bed/shower
Yes	Yes	NA	Yes	Yes

Offers

Intake	Admissions Limit	Number of applications	Offers	SEN	Children Looked after	Catchment area Sibling	Catchment Area	Out of Area Sibling	Out of area	Allocated	Applications refused	Appeals lodged	Appeals allowed
2022	60	52	24	0	0	7	5	7	5	0	0	NA	NA
2023	60	55	26	0	0	5	4	6	11	0	0	NA	NA
2024	60	39	18	0	0	2	5	7	4	0	0	NA	NA

Admissions Limit: 60

Furthest distance offered: 4.927 miles

Cottons Farm Primary Academy

Sheridan Street, Sinfin, Derby DE24 9HG Telephone: 771370 Headteacher: Mrs K Patmore

Session times: 8.55am - 3.20pm

School Details

Age Range	No of Nursery Places	Open Evening	Where is uniform available from?	Does the school maintain a waiting list after the first term?
3-11	26 FT/52 PT	Contact the school	www.ahyde.co.uk	Yes

Accessibility

Disabled Parking	Basic Wheelchair Access into Main School Building	Basic Wheelchair Access into all Buildings on site	Disabled Toilet	Hygiene Room inc changing bed/shower
Yes	Yes	NA	Yes	Yes

Offers

Intake	Admissions Limit	Number of applications	Offers	SEN	Children Looked after	Catchment area Sibling	Catchment Area	Out of Area Sibling	Out of area	Allocated	Applications refused	Appeals lodged	Appeals allowed
2022	20	24	12	0	0	2	8	2	0	0	0	NA	NA
2023	20	20	11	0	0	5	4	0	2	0	0	NA	NA
2024	20	23	14	0	0	4	6	1	3	0	0	NA	NA

Admissions Limit: 15

Furthest distance offered: 3.098 miles

Academy Schools

Derwent Primary School

St Mark's Road, Derby DE21 6AL Telephone: 346222 Headteacher: Mrs E Burke

Session times: 8.45am - 3.15pm

School Details

Age Range	No of Nursery Places	Open Evening	Where is uniform available from?	Does the school maintain a waiting list after the first term?
2-11	26 FT/52 PT	Contact the school	Morleys, Chaddesden	Yes

Accessibility

Disabled Parking	Basic Wheelchair Access into Main School Building	Basic Wheelchair Access into all Buildings on site	Disabled Toilet	Hygiene Room inc changing bed/shower
Yes	Yes	Yes	Yes	No

Offers

Intake	Admissions Limit	Number of applications	Offers	SEN	Children Looked after	Catchment area Sibling	Catchment Area	Out of Area Sibling	Out of area	Allocated	Applications refused	Appeals lodged	Appeals allowed
2022	45	44	36	0	0	4	11	13	8	0	0	NA	NA
2023	45	37	28	0	0	11	6	3	8	0	0	NA	NA
2024	45	58	45	0	0	8	13	10	14	0	0	NA	NA

Admissions Limit: 45

Furthest distance offered: 3.938 miles

Firs Primary School

Raven Street, Derby DE22 3WA Telephone: 346230 Headteacher: Mrs P Martin

Session times: 8.55am - 3.30pm

School Details

Age Range	No of Nursery Places	Open Evening	Where is uniform available from?	Does the school maintain a waiting list after the first term?
3-11	39 FT/78 PT	Contact the school	From the school	Yes

Accessibility

Disabled Parking	Basic Wheelchair Access into Main School Building	Basic Wheelchair Access into all Buildings on site	Disabled Toilet	Hygiene Room inc changing bed/shower
Street Parking Only	Yes	Yes	Yes	No

Offers

Intake	Admissions Limit	Number of applications	Offers	SEN	Children Looked after	Catchment area Sibling	Catchment Area	Out of Area Sibling	Out of area	Allocated	Applications refused	Appeals lodged	Appeals allowed
2022	50	59	39	0	0	6	13	14	4	2	0	NA	NA
2023	50	82	57	0	0	15	20	9	9	4	0	NA	NA
2024	50	110	60	0	0	15	33	9	3	0	5		

Admissions Limit: 50

Furthest distance offered: 1.834 miles

Academy Schools

Griffe Field Primary School

Grosvenor Drive, Heatherton Village, Derby DE23 3UQ Telephone: 515718 Headteacher: Mrs E Mitchell

Session times: 8.55am - 3.20pm

School Details

Age Range	No of Nursery Places	Open Evening	Where is uniform available from?	Does the school maintain a waiting list after the first term?
3-11	26 FT/52 PT	Contact the school	Contact the school	Yes

Accessibility

Disabled Parking	Basic Wheelchair Access into Main School Building	Basic Wheelchair Access into all Buildings on site	Disabled Toilet	Hygiene Room inc changing bed/shower
Yes	Yes	NA	Yes	Yes

Offers

Intake	Admissions Limit	Number of applications	Offers	SEN	Children Looked after	Catchment area Sibling	Catchment Area	Out of Area Sibling	Out of area	Allocated	Applications refused	Appeals lodged	Appeals allowed
2022	60	188	60	1	1	9	15	11	23	0	33	Contact School	Contact School
2023	60	189	60	0	0	13	16	15	16	0	33	Contact School	Contact School
2024	60	180	60	1	1	5	12	16	25	0	34	Contact School	Contact School

Admissions Limit: 60

Furthest distance offered: 0.574 miles

Hackwood Primary Academy

240 Starflower Way, Mickleover, Derby DE3 0FD Telephone: 985466 Head of academy: Mr F Miah

Session times: 8.40am - 3:10pm

School Details

Age Range	No of Nursery Places	Open Evening	Where is uniform available from?	Does the school maintain a waiting list after the first term?
3-11	26 FT/52 PT	Contact the school	Andrew Hyde School Uniform	Yes

Accessibility

Disabled Parking	Basic Wheelchair Access into Main School Building	Basic Wheelchair Access into all Buildings on site	Disabled Toilet	Hygiene Room inc changing bed/shower
Yes	Yes	Yes	Yes	No

Offers

Intake	Admissions Limit	Number of applications	Offers	SEN	Children Looked after	Catchment area Sibling	Catchment Area	Out of Area Sibling	Out of area	Allocated	Applications refused	Appeals lodged	Appeals allowed
2022	30	105	30	0	0	6	17	5	2	0	23	2	0
2023	30	103	30	0	0	7	14	4	5	0	25	4	0
2024	30	89	30	1	0	10	13	6	0	0	16	2	0

Admissions Limit: 30

Furthest distance offered: 1.908 miles

Academy Schools

Homefields Primary School

Parkway, Chellaston, Derby DE73 5NY Telephone: 691351 Headteacher: Mrs D Rollerson

Session times: Reception 8.40am - 3.10pm, Others 8.50am - 3.20pm

School Details

Age Range	No of Nursery Places	Open Evening	Where is uniform available from?	Does the school maintain a waiting list after the first term?
3-11	26 FT/52 PT	Contact the school	www.myclothing.com www.schoolwearsolutions.com	Yes

Accessibility

Disabled Parking	Basic Wheelchair Access into Main School Building	Basic Wheelchair Access into all Buildings on site	Disabled Toilet	Hygiene Room inc changing bed/shower
Yes	Yes	Yes	Yes	Yes

Offers

Intake	Admissions Limit	Number of applications	Offers	SEN	Children Looked after	Catchment area Sibling	Catchment Area	Out of Area Sibling	Out of area	Allocated	Applications refused	Appeals lodged	Appeals allowed
2022	45	128	45	0	0	13	13	4	15	0	16	Contact School	Contact School
2023	45	115	45	0	0	9	16	5	15	0	14	Contact School	Contact School
2024	45	121	45	0	0	10	17	10	8	0	14	Contact School	Contact School

Admissions Limit: 45

Furthest distance offered: 0.301 miles

Lakeside Primary Academy

London Road, Alvaston, Derby, DE24 8UY Telephone: 571485 Executive Principal: Mrs T Rolfs Head of

Academy: Mrs J Baker-Heath

Session times: 8.45am - 3.30pm

School Details

Age Range	No of Nursery Places	Open Evening	Where is uniform available from?	Does the school maintain a waiting list after the first term?
3-11	30	Contact the school	www.just-school-wear.co.uk	Yes

Accessibility

Disabled Parking	Basic Wheelchair Access into Main School Building	Basic Wheelchair Access into all Buildings on site	Disabled Toilet	Hygiene Room inc changing bed/shower
No	Yes	Yes	Yes	Yes

Offers

Intake	Admissions Limit	Number of applications	Offers	SEN	Children Looked after	Catchment area Sibling	Catchment Area	Out of Area Sibling	Out of area	Allocated	Applications refused	Appeals lodged	Appeals allowed
2022	90	99	68	0	0	17	26	17	8	0	0	NA	NA
2023	90	85	65	0	0	17	29	8	10	0	0	NA	NA
2024	90	91	63	0	0	19	25	11	8	0	0	NA	NA

Admissions Limit: 90

Furthest distance offered: 2.585 miles

Academy Schools

Lawn Primary School

Norbury Close, Allestree, Derby DE22 2QR Telephone: 550178 Headteacher: Mrs K Hambleton

Session times: 8.55am - 3.30pm

School Details

Age Range	Open Evening	Where is uniform available from?	Does the school maintain a waiting list after the first term?
5-11	Contact the school	Contact the school	Yes

Accessibility

Disabled Parking	Basic Wheelchair Access into Main School Building	Basic Wheelchair Access into all Buildings on site	Disabled Toilet	Hygiene Room inc changing bed/shower
Yes	Yes	Yes	Yes	Yes

Offers

Intake	Admissions Limit	Number of applications	Offers	SEN	Children Looked after	Catchment area Sibling	Catchment Area	Out of Area Sibling	Out of area	Allocated	Applications refused	Appeals lodged	Appeals allowed
2022	60	173	60	0	1	19	31	5	4	0	23	4	0
2023	60	183	60	0	0	19	26	9	6	0	27	3	0
2024	60	156	60	1	1	19	21	4	14	0	4		

Admissions Limit: 60

Furthest distance offered: 2.082 miles

Oak Grange Primary and Nursery School

New School Opened in September 2023

Stubble Road, Alvaston, Derby, DE24 0BL Telephone: 978681 Headteacher: Mrs S Coleman

Session times: 9.00 am – 3.30 pm

School Details

Age Range	No of Nursery Places	Open Evening	Where is uniform available from?	Does the school maintain a waiting list after the first term?
3-11	39	Contact the school	Contact the School	Yes

Accessibility

Disabled Parking	Basic Wheelchair Access into Main School Building	Basic Wheelchair Access into all Buildings on site	Disabled Toilet	Hygiene Room inc changing bed/shower
Yes	Yes	Yes	Yes	Yes

Offers

Intake	Admissions Limit	Number of applications	Offers	SEN	Children Looked after	Catchment area Sibling	Catchment Area	Out of Area Sibling	Out of area	Allocated	Applications refused	Appeals lodged	Appeals allowed
2024	45	78	38	2	0	0	0	0	36	0	0	0	0

Admissions Limit: 45

Furthest distance offered: 1.875 miles

Academy Schools

Pear Tree Junior School

Pear Tree Street, Derby DE23 8PN Telephone: 760610 Headteacher: Mr A Sharp

Session times: 8.50am - 3.20pm

School Details

Age Range	Open Evening	Where is uniform available from?	Does the school maintain a waiting list after the first term?
7-11	Contact the school	Uniform Direct	Yes

Accessibility

Disabled Parking	Basic Wheelchair Access into Main School Building	Basic Wheelchair Access into all Buildings on site	Disabled Toilet	Hygiene Room inc changing bed/shower
No	Yes - restricted access to upstairs classrooms, no lifts	Restricted	Yes	No

Offers

Intake	Admissions Limit	Number of applications	Offers	SEN	Children Looked after	Catchment area Sibling	Catchment Area	Out of Area Sibling	Out of area	Allocated	Applications refused	Appeals lodged	Appeals allowed
2022	90	112	90	0	0	20	42	9	29	0	4	NA	NA
2023	90	110	90	1	0	18	49	7	15	0	10	2	0
2024	90	131	90	0	0	20	56	3	11	0	17	4	1

Admissions Limit: 90

Furthest distance offered: 0.414 miles

Ravensdale Junior School

Devonshire Drive, Mickleover, Derby DE3 9EY Telephone: 512373 Headteacher: Mrs Z Cannon

Session times: 8.55am - 3.30pm

School Details

Age Range	Open Evening	Where is uniform available from?	Does the school maintain a waiting list after the first term?
7-11	Contact the school	Simply Uniform	Yes

Accessibility

Disabled Parking	Basic Wheelchair Access into Main School Building	Basic Wheelchair Access into all Buildings on site	Disabled Toilet	Hygiene Room inc changing bed/shower
Yes	Yes	NA	Yes	Yes

Offers

Intake	Admissions Limit	Number of applications	Offers	SEN	Children Looked after	Catchment area Sibling	Catchment Area	Out of Area Sibling	Out of area	Allocated	Applications refused	Appeals lodged	Appeals allowed
2022	90	85	77	1	0	8	20	16	32	0	0	0	NA
2023	90	97	90	1	0	10	19	18	42	0	0	0	NA
2024	90	97	90	0	0	29	24	0	32	5	0	NA	NA

Admissions Limit: 90

Furthest distance offered: 7.40 miles

Academy Schools

Reigate Park Primary Academy Enhanced Resource School

Reigate Drive, Mackworth, Derby DE22 4EQ Telephone: 298969 Executive Headteacher: Mrs L Thorne

Session times: 8.55am - 3.30pm

School Details

Age Range	No of Nursery Places	Open Evening	Where is uniform available from?	Does the school maintain a waiting list after the first term?
3-11	26 FT/52 PT	Contact the school	Uniform Direct	Yes

Accessibility

Disabled Parking	Basic Wheelchair Access into Main School Building	Basic Wheelchair Access into all Buildings on site	Disabled Toilet	Hygiene Room inc changing bed/shower
No	Yes	NA	Yes	Yes

Offers

Intake	Admissions Limit	Number of applications	Offers	SEN	Children Looked after	Catchment area Sibling	Catchment Area	Out of Area Sibling	Out of area	Allocated	Applications refused	Appeals lodged	Appeals allowed
2022	60	73	47	0	0	16	22	5	4	0	0	NA	NA
2023	60	66	51	0	0	13	15	5	17	1	0	NA	NA
2024	60	78	55	0	0	18	12	9	16	0	0	NA	NA

Admissions Limit: 60

Furthest distance offered: 3.487 miles

Springfield Primary School

West Road, Spondon, Derby DE21 7AB Telephone: 673846 Headteacher: Mr D Blackwell

Session times: 8.50am - 3.20pm

School Details

Age Range	Open Evening	Where is uniform available from?	Does the school maintain a waiting list after the first term?
5-11	Contact the school	Contact the school	Yes

Accessibility

Disabled Parking	Basic Wheelchair Access into Main School Building	Basic Wheelchair Access into all Buildings on site	Disabled Toilet	Hygiene Room inc changing bed/shower
Yes	Yes	Yes	Yes	Yes

Offers

Intake	Admissions Limit	Number of applications	Offers	SEN	Children Looked after	Catchment area Sibling	Catchment Area	Out of Area Sibling	Out of area	Allocated	Applications refused	Appeals lodged	Appeals allowed
2022	45	90	45	1	0	7	10	13	14	0	2	1	1
2023	45	100	45	0	0	7	4	21	13	0	0	NA	NA
2024	45	83	40	3	1	6	7	6	17	0	0	NA	NA

Admissions Limit: 45

Furthest distance offered: 2.101 miles

Academy Schools

Village Primary Academy

155 Village Street, Derby DE23 8DF Telephone: 766492 Principal Headteacher: Miss Emma Luff

Session times: 8.50am - 3.20pm

School Details

Age Range	No of Nursery Places	Open Evening	Where is uniform available from?	Does the school maintain a waiting list after the first term?
3-11	39 FT/78 PT	Contact the school	Andrew Hyde School Uniform	Yes

Accessibility

Disabled Parking	Basic Wheelchair Access into Main School Building	Basic Wheelchair Access into all Buildings on site	Disabled Toilet	Hygiene Room inc changing bed/shower
Yes	Yes	Yes	Yes	Yes

Offers

Intake	Admissions Limit	Number of applications	Offers	SEN	Children Looked after	Catchment area Sibling	Catchment Area	Out of Area Sibling	Out of area	Allocated	Applications refused	Appeals lodged	Appeals allowed
2022	90	124	90	0	0	27	25	22	16	0	0	NA	NA
2023	90	105	83	0	1	26	27	11	17	1	0	NA	NA
2024	90	138	84	1	2	15	34	14	17	1	0	NA	NA

Admissions Limit: 90

Furthest distance offered: 1.186 miles

The following schools follow their own Over-subscription criteria

Free School

Akaal Primary School

Grange Avenue, Derby, DE23 8DG Telephone: 499011 Headteacher: Miss Z Parkes

Session times: 8.30am - 3.30pm

School Details

Age Range	Open Evening	Where is uniform available from?	Does the school maintain a waiting list after the first term?
4-11	4 to 8 th November 2024	Contact the school	Yes

Offers

Intake	Admissions Limit	Number of applications	Offers	SEN	Children Looked after	Catchment area Sibling	Catchment Area	Out of Area Sibling	Out of area	Allocated	Applications refused	Appeals lodged	Appeals allowed
2022	60	33	19				Contact School				0	NA	NA
2023	60	32	14				Contact School				0	NA	NA
2024	60	41	21				Contact School				0	NA	NA

Admissions Limit: 60

Furthest distance offered: 2.845 miles

In each year group where more than 60 applications are received, 50% of the places will be available to pupils who are practising members of the Sikh faith, [if 30 or more applicants are of the Sikh faith]. The remaining places will be available to pupils from any faith or none.

Applications for Sikh faith places must also include a supplementary information form that it is signed by the President or Secretary of the Gurdwara the child normally attends. The supplementary information form can be downloaded from the school's website or obtained from the school. It must be sent with the application form.

Akaal Primary School does not have a designated catchment area.

For a detailed breakdown of how places are allocated if oversubscribed, please see the school website www.akaalprimaryschool.org/our-story/faq/admissions/admissions-from-september-2025.

Academy School

Asterdale Primary School

Borrowash Road, Spondon, Derby DE21 7PH Telephone: 662323 Headteacher: Mr D Evans

Session times: 8.55am - 3.30pm

School Details

Age Range	No of Nursery Places	Open Evening	Where is uniform available from?	Does the school maintain a waiting list after the first term?
3-11	26 FT/52 PT	Contact the school	Morleys School Outfitters, Chaddesden	Yes

Accessibility

Disabled Parking	Basic Wheelchair Access into Main School Building	Basic Wheelchair Access into all Buildings on site	Disabled Toilet	Hygiene Room inc changing bed/shower
Yes	Yes	NA	Yes	Yes

Offers

Intake	Admissions Limit	Number of applications	Offers	SEN	Children Looked after	Catchment area Sibling	Catchment Area	Out of Area Sibling	Out of area	Allocated	Applications refused	Appeals lodged	Appeals allowed
2022	30	47	26	0	1	10	8	2	5	0	0	NA	NA
2023	30	49	30	0	0	10	10	6	4	0	1	NA	NA
2024	30	38	26	1	1	3	16	1	4	0	0	NA	NA

Admissions Limit: 30

Furthest distance offered: 2.282 miles

Over-Subscription Criteria

1. Looked after children and all previously looked after children, including those children who appear (to the admission authority) to have been in state care outside of England and ceased to be in state care as a result of being adopted;
2. Those children who are considered to have exceptional medical or social reasons as to why they should attend a particular school. Parents will be required to submit evidence to support their application under this criterion;
3. Children living in the catchment area of the school at the time of admission who are siblings of current or past pupils of the school;
4. Children living outside the catchment area at the time of admission who are siblings of current or past pupils of the school;
5. Children living in the catchment area of the school at the time of admission who do not have siblings who are current or past pupils of the school.
6. Children living outside the catchment area at the time of admission who do not have siblings who are current or past pupils of the school.

Academy School

Beaufort Primary School

Hampshire Road, Derby DE21 6BT Telephone: 347275 Headteacher: Ms C Dewberry

Session times: 8.55am - 3.15pm

School Details

Age Range	No of Nursery Places	Open Evening	Where is uniform available from?	Does the school maintain a waiting list after the first term?
3-11	52 FT/104 PT	Contact the school	Contact the school	Yes

Accessibility

Disabled Parking	Basic Wheelchair Access into Main School Building	Basic Wheelchair Access into all Buildings on site	Disabled Toilet	Hygiene Room inc changing bed/shower
Yes	Restricted	NA	Yes	No

Offers

Intake	Admissions Limit	Number of applications	Offers	SEN	Children Looked after	Catchment area Sibling	Catchment Area	Out of Area Sibling	Out of area	Allocated	Applications refused	Appeals lodged	Appeals allowed
2022	60	54	33	0	0	6	11	6	10	0	0	NA	NA
2023	60	42	24	0	2	5	8	4	5	0	0	NA	NA
2024	60	51	28	0	0	8	8	7	5	0	0	NA	NA

Admissions Limit: 30

Furthest distance offered: 1.368 miles

Over-Subscription Criteria

1. Looked after children and all previously looked after children, including those children who appear (to the admission authority) to have been in state care outside of England and ceased to be in state care as a result of being adopted;
2. Those children who are considered to have exceptional medical or social reasons as to why they should attend a particular school. Parents will be required to submit evidence to support their application under this criterion;
3. Children living in the catchment area of the school at the time of admission who are siblings of current or past pupils of the school;
4. Children living outside the catchment area at the time of admission who are siblings of current or past pupils of the school;
5. Children living in the catchment area of the school at the time of admission who do not have siblings who are current or past pupils of the school.
6. Children living outside the catchment area at the time of admission who do not have siblings who are current or past pupils of the school.

Academy School

Bishop Lonsdale Church of England Primary School and Nursery

St Alban's Road, Derby DE22 3HH Telephone: 344795 Executive Headteacher: Mr M Hetherington Head of School: Miss S Brownhall

Session times: KS1 9am - 3.25pm, KS2 9am - 3.30pm

School Details

Age Range	No of Nursery Places	Open Evening	Where is uniform available from?	Does the school maintain a waiting list after the first term?
3-11	39 FT/78 PT	Contact the school	Uniform Direct	Yes

Accessibility

Disabled Parking	Basic Wheelchair Access into Main School Building	Basic Wheelchair Access into all Buildings on site	Disabled Toilet	Hygiene Room inc changing bed/shower
Yes	Yes	NA	Yes	Yes

Offers

Intake	Admissions Limit	Number of applications	Offers	Cat 1	Cat 2	Cat 3	Cat 4	Cat 5	Cat 6	Cat 7	Cat 8	Cat 9	Applications refused	Appeals allowed
2022	30	46	22	0	7	0	0	0	1	0	10	4	0	NA
2023	30	42	28	1	8	0	0	0	0	0	16	3	0	NA
2024	30	70	30	0	18	22	0	NA	NA	NA	NA	NA	7	Contact the School

Admissions Limit: 30

Furthest distance offered: 0.304 miles

Over-Subscription Criteria

When the school is oversubscribed, after the admission of pupils with Statements of Special Educational Needs where the school is named in the Statement, priority for admission will be given to those children who meet the criteria set out below, in order...

1. Looked After Children (LAC) and previously LAC (PLAC) including those who have been in state care outside of England and ceased to be in state care as a result of being adopted. IAPLAC - Internationally Adopted Previously Looked After Children. For children who were in state care outside of England and were then adopted, you must submit evidence with your application so this priority can be verified. The evidence must show your child's adoption (an adoption order or adoption birth certificate); and - that they were in state care outside England (a letter from the state).
2. Children who already have brothers or sisters in the school at the time of admission.
3. Children who live within the area formally covered by the Parish of St. Luke.
4. All other children.

Tiebreaker for applications of equal strength: the child living nearest to the school, measured by a straight line to the entrance gates, using the Council's measuring system.

Note: A brother or sister is classed as having one or both natural parents in common, are related by parent's marriage or are adopted or fostered. A brother or sister must be living at the same address.

Academy School

Borrow Wood Primary

Arundel Drive, Spondon, Derby DE21 7QW Telephone: 662826 Headteacher: Miss Z Fletcher

Session times: 8.55am - 3.35pm

School Details

Age Range	No of Nursery Places	Open Evening	Where is uniform available from?	Does the school maintain a waiting list after the first term?
3-11	26 FT/52 PT	Contact the school	Morleys Uniform Shop	Yes

Accessibility

Disabled Parking	Basic Wheelchair Access into Main School Building	Basic Wheelchair Access into all Buildings on site	Disabled Toilet	Hygiene Room inc changing bed/shower
Yes	Yes	Yes	Yes	No

Offers

Intake	Admissions Limit	Number of applications	Offers	SEN	Children Looked after	Catchment area Sibling	Catchment Area	Out of Area Sibling	Out of area	Allocated	Applications refused	Appeals lodged	Appeals allowed
2022	60	47	28	0	0	6	7	7	8	0	0	NA	NA
2023	60	54	33	0	0	12	17	3	1	0	0	NA	NA
2024	60	68	29	0	0	10	7	5	7	0	0	NA	NA

Admissions Limit: 30

Furthest distance offered: 4.709 miles

Over-Subscription Criteria

1. Looked after children and all previously looked after children, including those children who appear (to the admission authority) to have been in state care outside of England and ceased to be in state care as a result of being adopted;
2. Those children who are considered to have exceptional medical or social reasons as to why they should attend a particular school. Parents will be required to submit evidence to support their application under this criterion;
3. Children living in the catchment area of the school at the time of admission who are siblings of current or past pupils of the school;
4. Children living outside the catchment area at the time of admission who are siblings of current or past pupils of the school;
5. Children living in the catchment area of the school at the time of admission who do not have siblings who are current or past pupils of the school.
6. Children living outside the catchment area at the time of admission who do not have siblings who are current or past pupils of the school.

Academy School

Chellaston Infant School

School Lane, Chellaston, Derby DE73 6TA Telephone: 700298 Headteacher: Mrs L Turner-Rowe

Session times: 8.50am - 3.30pm

School Details

Age Range	Open Evening	Where is uniform available from?	Does the school maintain a waiting list after the first term?
5-7	Contact the school	www.clothing4schools.com	Yes

Accessibility

Disabled Parking	Basic Wheelchair Access into Main School Building	Basic Wheelchair Access into all Buildings on site	Disabled Toilet	Hygiene Room inc changing bed/shower
Yes – parking limited	Yes	Yes	Yes	No

Offers

Intake	Admissions Limit	Number of applications	Offers	SEN	Children Looked after	Catchment area Sibling	Catchment Area	Out of Area Sibling	Out of area	Allocated	Applications refused	Appeals lodged	Appeals allowed
2022	120	163	88	0	0	8	51	6	23	0	0	NA	NA
2023	120	160	80	0	2	9	49	2	18	0	0	NA	NA
2024	120	127	66	0	0	5	40	6	15	0	0	NA	NA

Admissions Limit: 90

Furthest distance offered: 2.076 miles

Over-Subscription Criteria

When the school is oversubscribed, after the admission of children who have a Education Health and Care Plan (EHCP) where the school is named in the EHCP, priority for admission will be given to those children who meet the criteria set out below, in priority order.

The linked school is Chellaston Junior School

1. Children looked after by a local authority and previously looked after children, including those children who appear (to the admission authority) to have been in state care outside of England and ceased to be in state care as a result of being adopted.
2. Children who live in the catchment area and, at the time of admission, have a sibling attending the infant school or linked junior school.
3. Children whose parents are living in the school catchment area at the school admissions closing date. The admissions authority, Derby City Council will also reassess applications on the National Offer Date.
4. Other children who live in the catchment area at the closing date for applications.
5. Children who do not live in the catchment area served by the school but who have brothers or sisters* of compulsory school age attending the school or the linked junior school at the time of their admission.
6. Children who do not live in the catchment area served by the school.

Academy School

Chellaston Junior School

Maple Drive, Chellaston DE73 6PZ Telephone: 701460 Headteacher: Mrs L Turner-Rowe

Session times: 8.50am - 3.20pm

School Details

Age Range	Open Evening	Where is uniform available from?	Does the school maintain a waiting list after the first term?
7-11	Contact the school	Refer to website	Yes

Accessibility

Disabled Parking	Basic Wheelchair Access into Main School Building	Basic Wheelchair Access into all Buildings on site	Disabled Toilet	Hygiene Room inc changing bed/shower
Yes	Yes	Yes	Yes	No

Offers

Intake	Admissions Limit	Number of applications	Offers	SEN	Children Looked after	Catchment area Sibling	Catchment Area	Out of Area Sibling	Out of area	Allocated	Applications refused	Appeals lodged	Appeals allowed
2022	128	145	124	0	1	22	58	17	26	0	0	NA	NA
2023	128	131	109	0	0	23	55	9	22	0	0	NA	NA
2024	90	108	88	1	0	19	43	9	16	0	0	NA	NA

Admissions Limit: 90

Furthest distance offered: 2.071 miles

Over-Subscription Criteria

1. Children with an Education Health and Care Plan where the school is named in the Statement.
2. Children "looked after" by the Local Authority or who were previously looked after but immediately after being looked after became subject to an adoption, residence, or special guardianship order.
3. Children who live within the catchment area and at the time of admission have brothers or sisters attending Chellaston Junior or Chellaston Infant School.
4. Other children who attend Chellaston Infant School at the closing date for admissions, have a sibling attending Chellaston Infant or Junior School.
5. Children who live in the current catchment area of the school.
6. Children who are not living within the school's catchment area.
7. Children whose parents did not request a place by 15 January deadline.

Tiebreaker for applications of equal strength: shortest available route from school measured by a straight line using the Council's measuring system.

Note: A brother or sister is classed as having one or both natural parents in common, are related by parent's marriage or are adopted or fostered. A brother or sister must be living at the same address.

The new housing development currently known as Fellow Lands Way, Chellaston, will be excluded from the catchment area of Chellaston Junior School and added to the catchment area of Oakwood Junior School. The change relates to new housing only at Fellow Lands Way and will not impact on existing properties.

The new housing development Chellaston Fields on the Swarkestone Road field opposite the Bonnie Prince, will be excluded from the catchment area as it is in South Derbyshire District Council and school places will be allocated by Derbyshire County Council.

Academy School

Cherry Tree Hill Primary School

Lime Grove, Chaddesden, Derby DE21 6WL Telephone: 673520 Headteacher: Mr P Appleton

Session times: 8.55am - 3.30pm

School Details

Age Range	No of Nursery Places	Open Evening	Where is uniform available from?	Does the school maintain a waiting list after the first term?
3-11	26 FT/52 PT	Contact the school	Morleys and www.yourschooluniform.com	Yes

Accessibility

Disabled Parking	Basic Wheelchair Access into Main School Building	Basic Wheelchair Access into all Buildings on site	Disabled Toilet	Hygiene Room inc changing bed/shower
Yes	Yes	Yes	Yes	No

Offers

Intake	Admissions Limit	Number of applications	Offers	SEN	Children Looked after	Catchment area Sibling	Catchment Area	Out of Area Sibling	Out of area	Allocated	Applications refused	Appeals lodged	Appeals allowed
2022	90	119	80	0	0	9	19	26	26	0	0	NA	NA
2023	90	115	70	0	1	8	14	18	29	0	0	NA	NA
2024	90	115	71	0	0	12	19	22	18	0	0	NA	NA

Admissions Limit: 90

Furthest distance offered: 11.011 miles

Over-Subscription Criteria

1. Looked after children and all previously looked after children, including those children who appear (to the admission authority) to have been in state care outside of England and ceased to be in state care as a result of being adopted;
2. Those children who are considered to have exceptional medical or social reasons as to why they should attend a particular school. Parents will be required to submit evidence to support their application under this criterion;
3. Children living in the catchment area of the school at the time of admission who are siblings of current or past pupils of the school;
4. Children living outside the catchment area at the time of admission who are siblings of current or past pupils of the school;
5. Children living in the catchment area of the school at the time of admission who do not have siblings who are current or past pupils of the school.
6. Children living outside the catchment area at the time of admission who do not have siblings who are current or past pupils of the school.

Academy School

Grampian Primary Academy

Grampian Way, Sinfin, Derby DE24 9LU Telephone: 765546 Headteacher: Mrs M Murfin

Session times: 9am - 3.30pm

School Details

Age Range	No of Nursery Places	Open Evening	Where is uniform available from?	Does the school maintain a waiting list after the first term?
3-11	26 FT/52 PT	Contact the school	www.myclothing.com	Yes

Accessibility

Disabled Parking	Basic Wheelchair Access into Main School Building	Basic Wheelchair Access into all Buildings on site	Disabled Toilet	Hygiene Room inc changing bed/shower
Yes	Internal wheelchair access restricted	Yes	Yes	Yes

Offers

Intake	Admissions Limit	Number of applications	Offers	SEN	Children Looked after	Catchment area Sibling	Catchment Area	Out of Area Sibling	Out of area	Allocated	Applications refused	Appeals lodged	Appeals allowed
2022	30	70	30	0	0	9	14	1	6	0	1	Contact School	Contact School
2023	30	63	26	0	0	7	10	1	8	0	0	NA	NA
2024	30	46	25	0	0	4	8	5	8	0	0	NA	NA

Admissions Limit: 30

Furthest distance offered: 1.659 miles

Over-Subscription Criteria

1. Looked After Children and Previously Looked After Children, including those children who appear to have been in state care outside of England and ceased to be in state care as a result of being adopted;
2. Children with a sibling attending the school at the time of application;
3. Children living within the Catchment Area;
4. Other children by distance from the School, with priority for admission given to children who live nearest to the School. Distance will be measured by Derby City computer software

Academy School

Hardwick Primary School

Dover Street, Derby DE23 6QP Telephone: 272249 Executive Headteacher: Mr J Gallimore

Session times: 8.45am - 3.15pm

School Details

Age Range	No of Nursery Places	Open Evening	Where is uniform available from?	Does the school maintain a waiting list after the first term?
3-11	30 FT/60 PT	Contact the school	Uniform Direct	Yes

Accessibility

Disabled Parking	Basic Wheelchair Access into Main School Building	Basic Wheelchair Access into all Buildings on site	Disabled Toilet	Hygiene Room inc changing bed/shower
Yes	Yes	Yes	NA	Yes

Offers

Intake	Admissions Limit	Number of applications	Offers	SEN	Children Looked after	Catchment area Sibling	Out of Area Sibling	St Chad's	Catchment Area	Out of area	Allocated	Applications refused	Appeals lodged	Appeals allowed
2022 Reception	60	177	60	0	0	6	31	NA	15	8	0	26	1	0
2022 Year 3	30	83	30	0	1	3	1	24	1	0	0	15	1	0
2023 Reception	60	182	60	0	0	11	22	NA	13	14	0	21	6	0
2023 Year 3	30	94	30	0	0	6	1	22	1	0	0	35	1	0
2024 Reception	60	195	60	0	0	9	16	NA	18	17	0	30	3	0
2024 Year 3	30	91	32	0	0	6	1	23	2	0	0	60	4	2

Admissions Limit: KS1: 60 KS2: 90

Furthest distance offered: Reception 0.28 miles
Junior 0.596 miles

Over-Subscription Criteria

When the school is oversubscribed, after the admission of pupils with Education Health and Care Plans where the school is named in the Statement, priority for admission will then be given to those children who meet the criteria set out below, in order...

1. A 'looked after child' or a child who was previously looked after but immediately after being looked after became subject to an adoption, residence, or special guardianship order in accordance with Section 22(1) of the Children Act 1989.
2. Children who are both living in the catchment area served by the school and have brothers or sisters* of compulsory school age still attending the school at the time of their admission.
3. Children who do not live in the catchment area served by the school but who have brothers or sisters* of compulsory school age attending the school at the time of their admission.
4. For KS2 entry, priority will be given to children currently attending St Chad's C of E Nursery & Infant School - as the main feeder school to Hardwick Primary School.
5. Other children living in the catchment area at the time of admission.
6. Other children outside the catchment area whose parents have requested a place

For the purposes of admissions, we class a brother or sister as:

- having one or both natural parents in common
- are related by a parent's marriage
- are adopted or fostered.

Note: a brother or sister must be living at the same address. Cousins are not classed as brothers or sisters.

Where we have to make a choice between children who meet the same criteria, we will give priority to the child living nearest the school, measured by a straight line. The line will be measured from the home address to the school using the national Ordnance Survey set points.

Academy School

Landau Forte Academy Moorhead

Brackens Lane, Alvaston, Derby DE24 0AN Telephone: 571162 Principal: Mrs R McNeil

Session times: 8.45am - 3.15pm

School Details

Age Range	Open Evening	Where is uniform available from?	Does the school maintain a waiting list after the first term?
5-11	Contact the school	Morleys	No

Accessibility

Disabled Parking	Basic Wheelchair Access into Main School Building	Basic Wheelchair Access into all Buildings on site	Disabled Toilet	Hygiene Room inc changing bed/shower
Yes	Yes	Yes	Yes	No

Offers

Intake	Admissions Limit	Number of applications	Offers	SEN	Children Looked after	Catchment area Sibling	Catchment Area	Out of Area Sibling	Out of area	Allocated	Applications refused	Appeals lodged	Appeals allowed
2022	45	33	17	1	0	2	4	3	7	0	0	NA	NA
2023	45	39	15	0	0	3	3	7	2	0	0	NA	NA
2024	45	45	22	0	0	4	6	3	9	0	0	NA	NA

Admissions Limit: 45

Furthest distance offered: 3.433 miles

Over-Subscription Criteria

When the school is oversubscribed, after the admission of pupils with Statements of Special Educational Needs where the school is named in the Statement, priority for admission will then be given to those children who meet the criteria set out below, in order...

1. A 'looked after child' or a child who was previously looked after but immediately after being looked after became subject to an adoption, residence, or special guardianship order in accordance with Section 22(1) of the Children Act 1989.
2. Children who are both living in the catchment area served by the Academy and have brothers or sisters* of compulsory school age still attending the school at the time of their admission.
3. Children who do not live in the catchment area served by the Academy but who have brothers or sisters* of compulsory school age attending the school at the time of their admission.
4. Other children living in the catchment area at the time of admission.
5. Other children whose parents have requested a place.
6. Children whose parents did not request a place by 15 January deadline.

* For the purposes of admissions, we class a brother or sister as:

- having one or both natural parents in common
- are related by a parent's marriage
- are adopted or fostered.

Note: a brother or sister must be living at the same address. Cousins are not classed as brothers or sisters.

Where we have to make a choice between children who meet the same criteria, we will give priority to the child living nearest the school, measured by a straight line. The line will be measured from the home address to the school using the national Ordnance Survey set points.

Academy School

Oakwood Junior School

Holbrook Road, Alvaston, Derby DE24 0DD Telephone: 571231 Headteacher: Mrs Atwal

Session times: 8.55am - 3.20pm

School Details

Age Range	Open Evening	Where is uniform available from?	Does the school maintain a waiting list after the first term?
7-11	Contact the school	Uniform Direct	Yes

Accessibility

Disabled Parking	Basic Wheelchair Access into Main School Building	Basic Wheelchair Access into all Buildings on site	Disabled Toilet	Hygiene Room inc changing bed/shower
Yes	Yes	NA	Yes	No

Offers

Intake	Admissions Limit	Number of applications	Offers	SEN	Children Looked after	Catchment area Sibling	Catchment Area	Out of Area Sibling	Out of area	Allocated	Applications refused	Appeals lodged	Appeals allowed
2022	90	111	86	4	1	13	30	8	30	0	0	NA	NA
2023	90	106	86	1	0	19	35	10	20	1	0	NA	NA

Admissions Limit: 90

Furthest distance offered: 4.061 miles

Over-Subscription Criteria

1. Looked after children and all previously looked after children, including those children who appear (to the admission authority) to have been in state care outside of England and ceased to be in state care as a result of being adopted;
2. Those children who are considered to have exceptional medical or social reasons as to why they should attend a particular school. Parents will be required to submit evidence to support their application under this criterion;
3. Children living in the catchment area of the school at the time of admission who are siblings of current or past pupils of the school;
4. Children living outside the catchment area at the time of admission who are siblings of current or past pupils of the school;
5. Children living in the catchment area of the school at the time of admission who do not have siblings who are current or past pupils of the school.
6. Children living outside the catchment area at the time of admission who do not have siblings who are current or past pupils of the school.

Academy School

Portway Junior School

Robincroft Road, Allestree, Derby DE22 2GL Telephone: 550113 Headteacher: Miss Emma Wilkinson

Session times: 8.55am - 3.30pm

School Details

Age Range	Open Evening	Where is uniform available from?	Does the school maintain a waiting list after the first term?
7-11	Contact the school	See links on school website	Yes

Accessibility

Disabled Parking	Basic Wheelchair Access into Main School Building	Basic Wheelchair Access into all Buildings on site	Disabled Toilet	Hygiene Room inc changing bed/shower
Yes	Yes	Yes	Yes	No

Offers

Intake	Admissions Limit	Number of applications	Offers	SEN	Children Looked after	Catchment area Sibling	Catchment Area	Out of Area Sibling	Out of area	Allocated	Applications refused	Appeals lodged	Appeals allowed
2022	90	88	83	0	0	16	25	11	31	0	0	NA	NA
2023	90	80	79	0	0	13	19	10	37	0	0	NA	NA
2024	60	59	56	0	0	10	15	12	19	0	0	NA	NA

Admissions Limit: 60

Furthest distance offered: 2.631 miles

Over-Subscription Criteria

1. Looked after children and all previously looked after children, including those children who appear (to the admission authority) to have been in state care outside of England and ceased to be in state care as a result of being adopted;
2. Those children who are considered to have exceptional medical or social reasons as to why they should attend a particular school. Parents will be required to submit evidence to support their application under this criterion;
3. Children living in the catchment area of the school at the time of admission who are siblings of current or past pupils of the school;
4. Children living outside the catchment area at the time of admission who are siblings of current or past pupils of the school;
5. Children living in the catchment area of the school at the time of admission who do not have siblings who are current or past pupils of the school.
6. Children living outside the catchment area at the time of admission who do not have siblings who are current or past pupils of the school.

Foundation School

Shelton Junior School

Carlton Avenue, Shelton Lock, Derby DE24 9EJ Telephone: 701212 Headteacher: Mr J Bacon
Session times: 8.50am - 3.30pm

School Details

Age Range	Open Evening	Where is uniform available from?	Does the school maintain a waiting list after the first term?
7-11	Contact the school	Uniform Direct / Marks & Spencer	No

Accessibility

Disabled Parking	Basic Wheelchair Access into Main School Building	Basic Wheelchair Access into all Buildings on site	Disabled Toilet	Hygiene Room inc changing bed/shower
No	Yes	NA	Yes	No

Offers

Intake	Admissions Limit	Number of applications	Offers	SEN	Cat 1	Cat 2	Cat 3	Cat 4	Cat 5	Cat 6	Allocated	Applications refused
2022	75	93	67	1	0	34	10	18	0	4	0	0
2023	75	84	68	1	0	28	10	26	0	4	0	0
2024	75	79	61	3	1	31	7	18	0	1	0	0

Admissions Limit: 75

Furthest distance offered: 1.864 miles

Over-Subscription Criteria

When the school is oversubscribed, after the admission of pupils with Statements of Special Educational Needs where the school is named in the Statement, priority for admission will be give to those children who meet the criteria set out below, in order...

1. A 'looked after child' or a child who was previously looked after but immediately after being looked after became subject to an adoption, residence, or special guardianship order 67. A looked after child is a child who is (a) in the care of a local authority, or (b) being provided with accommodation by a local authority in the exercise of their social services functions (see the definition in section 22(1) of the Children Act 1989).
2. Children living in the school's normal area as currently defined by the LEA.
3. Children having a brother or sister currently attending at the time of admission.
4. Children attending Shelton Infant School but living outside the 'normal area' as currently defined by the LEA.
5. Children who have medical or social grounds, provided that this is supported by a written statement of evidence from a doctor, social worker or educational welfare officer at the time of the original application.
6. Other children on the basis of proximity to school, ie nearest to the school front entrance measured by a straight line.

Tiebreaker for applications of equal strength: distance from school in a straight line using the councils measuring system.

Note: A brother or sister is classed as having one or both natural parents in common, are related by parent's marriage or are adopted or fostered. A brother or sister must be living at the same address.

Academy School

St Alban's Catholic Voluntary Academy

Newstead Avenue, Chaddesden, Derby DE21 6NU Telephone: 673823 Headteacher: Mr T Brogan

Session times: 8.55am - 3.30pm

School Details

Age Range	No of Nursery Places	Open Evening	Where is uniform available from?	Does the school maintain a waiting list after the first term?
3-11	39 FT/PT 78	Contact the school	Morley's School Outfitters Chaddesden; Tesco Online; Price & Buckland Online	Contact the school

Accessibility

Disabled Parking	Basic Wheelchair Access into Main School Building	Basic Wheelchair Access into all Buildings on site	Disabled Toilet	Hygiene Room inc changing bed/shower
Yes	Yes	Yes	Yes	No

Offers

Intake	Admissions Limit	Number of applications	Offers	Cat 1	Cat 2	Cat 3	Cat 4	Cat 5	Cat 6	Cat 7	Cat 8	Applications refused
2022	45	58	42	0	19	1	0	0	5	0	17	0
2023	45	66	44	0	15	1	0	0	2	0	26	0
2024	45	55	39	0	10	1	0	0	5	0	23	0

Admissions Limit: 45

Furthest distance offered: 1.939 miles

Over-Subscription Criteria

Children who have a Statement of Special Educational Needs or Educational Health and Care Plan (EHCP) which names the school will be admitted. This will reduce the number of places available.

1. First priority in all categories will be given to siblings that is, children who will have brothers or sisters attending the school at the proposed time of admission.
2. Catholic children who are looked after Note: Looked after children are those who are either looked after by the Local Authority or children who were looked after, but cease to be so because they were adopted (or became subject to a residence order or special guardianship order).
3. Catholic children living in the parish served by the school.
4. Catholic children living outside the parish.
5. Other children who are 'looked after'. Note: Looked after children are those who are either looked after by the Local Authority or children who were looked after, but cease to be so because they were adopted (or became subject to a residence order or special guardianship order).
6. Catechumens, Candidates and members of Eastern Christian Churches.
7. Children of other Christian denominations whose membership is evidenced by a minister of religion.
8. Children of other faiths whose membership is evidenced by a religious leader.
9. Any other children not within categories 1-7.

If **Categories One to Three** are oversubscribed, priority (after sibling priority) will be given to children whose parents / carers have completed and returned a Mass Verification form where these have been requested.

If **any categories** are oversubscribed, (after sibling priority) priority will be to the child living nearest the school, measured by a straight line. The line will be measured from the home address to the school using the national Ordnance Survey set points. The distance will be measured by the local authority and the data will be supplied to governors.

Supplementary Information Form - returned directly to the school.

Note: A brother or sister is classed as having one or both natural parents in common, are related by parent's marriage or are adopted or fostered. A brother or sister must be living at the same address.

Academy School

St Chad's Church of England Nursery and Infant

Gordon Road, Derby DE23 6WR Telephone: 345997 Headteacher: Ms K Leach

Session times: 9am - 3.15pm

School Details

Age Range	No of Nursery Places	Open Evening	Where is uniform available from?	Does the school maintain a waiting list after the first term?
2-7	26 FT/52 PT	Contact the school	Uniform Direct	Yes

Accessibility

Disabled Parking	Basic Wheelchair Access into Main School Building	Basic Wheelchair Access into all Buildings on site	Disabled Toilet	Hygiene Room inc changing bed/shower
Street Parking Only	Yes – restricted access to playground	NA	Yes	Yes

Offers

Intake	Admissions Limit	Number of applications	Offers	SEN	Children Looked after	Catchment area Sibling	Catchment Area	Out of Area Sibling	Out of area	Allocated	Applications refused	Appeals lodged	Appeals allowed
2022	40	57	27	0	0	4	11	2	10	0	0	NA	NA
2023	40	44	22	1	0	2	12	3	4	0	0	NA	NA
2024	40	85	39	0	0	2	16	3	18	0	0	NA	NA

Admissions Limit: 40

Furthest distance offered: 0.485 miles

Over-Subscription Criteria

When the school is oversubscribed, after the admission of pupils with Statements of Special Educational Needs or EHCP where the school is named in the Statement, priority for admission will then be given to those children who meet the criteria set out below, in order...

1. Looked after children and all previously looked after children, including those children who appear (to the admission authority) to have been in state care outside of England and ceased to be in state care as a result of being adopted".
2. Children who are both living in the catchment area served by the school and have brothers or sisters* of compulsory school age still attending the school at the time of their admission.
3. Other children living in the catchment area at the time of admission (the Council will assess applications from the address the parents are living at the closing date, and will reassess applications on the National Offer Date).
4. Children who do not live in the catchment area served by the school but who have brothers or sisters* of compulsory school age attending the school at the time of their admission.
5. St Chad's - children whose parents request a place on religious grounds as stated on their application form.
6. Other children whose parents have requested a place.
7. Children whose parents did not request a place by the closing date for admissions.

* For the purposes of admissions, we class a brother or sister as:

- having one or both natural parents in common
- are related by a parent's marriage
- are adopted or fostered.

Note: a brother or sister must be living at the same address. Cousins are not classed as brothers or sisters. Where we have to make a choice between children who meet the same criteria, we will give priority to the child living nearest the school, measured by a straight line. The line will be measured from the home address to the school using the national Ordnance Survey set points.

Academy School

St George's Catholic Voluntary Academy

Uplands Avenue, Littleover, Derby DE23 1GG Telephone: 766815 Headteacher: Ms R Snowdon-Poole
Session times: 8.45am - 3.15pm

School Details

Age Range	Open Evening	Where is uniform available from?	Does the school maintain a waiting list after the first term?
5-11	Contact the school	Uniform Direct	Contact the school

Accessibility

Disabled Parking	Basic Wheelchair Access into Main School Building	Basic Wheelchair Access into all Buildings on site	Disabled Toilet	Hygiene Room inc changing bed/shower
Yes	Yes	NA	Yes	Yes

Offers

Intake	Admissions Limit	Number of applications	Offers	Cat 1	Cat 2	Cat 3	Cat 4	Cat 5	Cat 6	Cat 7	Cat 8	Applications refused
2022	49	66	40	0	9	4	1	0	4	2	20	0
2023	49	88	49	0	14	0	0	1	4	5	25	0
2024	49	87	42	0	13	0	0	0	6	3	20	0

Admissions Limit: 49

Furthest distance offered: 2.078 miles

Over-Subscription Criteria

Children who have a Statement of Special Educational Needs or Educational Health and Care Plan (EHCP) which names the academy will be admitted. This will reduce the number of places available.

First priority in all categories will be given to siblings that is, children who will have brothers or sisters attending the school at the proposed time of admission.

1. A Catholic 'looked after child' or a child who was previously looked after but immediately after being looked after became subject to an adoption, residence, or special guardianship order in accordance with Section 22(1) of the Children Act 1989.
2. Catholic children living in the parish served by the academy.
3. Catholic children living outside the parish.
4. A 'looked after child' or a child who was previously looked after but immediately after being looked after became subject to an adoption, residence, or special guardianship order in accordance with Section 22(1) of the Children Act 1989.
5. Catechumens, Candidates and members of Eastern Christian Churches.
6. Children of other Christian denominations whose membership is evidenced by a minister of religion.
7. Children of other faiths whose membership is evidenced by a religious leader.
8. Any other children not within categories 1-7.

If oversubscribed, priority (after sibling priority) will be given to children whose parents / carers have completed and returned a Mass Verification form where these have been requested.

If any categories are oversubscribed, (after sibling priority) priority will be to the child living nearest the school, measured by a straight line. The line will be measured from the home address to the school using the national Ordnance Survey set points. The distance will be measured by the local authority and the data will be supplied to governors.

Supplementary Information Form - to be returned directly to the school.

Note: A brother or sister is classed as having one or both natural parents in common, are related by parent's marriage or are adopted or fostered. A brother or sister must be living at the same address.

Voluntary Aided School

St James' Church of England Infant and Nursery

Leonard Street, Derby DE23 8EG Telephone: 854984 Headteacher: Luisa Pancisi

Session times: 8.30am - 3pm

School Details

Age Range	Open Evening	Where is uniform available from?	Does the school maintain a waiting list after the first term?
2-7	Contact the school	No specific supplier	Contact the school

Accessibility

Disabled Parking	Basic Wheelchair Access into Main School Building	Basic Wheelchair Access into all Buildings on site	Disabled Toilet	Hygiene Room inc changing bed/shower
Yes	Yes	NA	Yes	Yes

Offers

Intake	Admissions Limit	Number of applications	Offers	SEN	Cat 1	Cat 2	Cat 3	Cat 4	Cat 5	Allocated	Applications refused	Number of Appeals
2022	30	42	18	2	0	6	4	0	5	1	0	NA
2023	30	50	28	0	0	3	7	3	15	0	0	NA
2024	30	77	29	0	0	0	8	2	19	0	0	NA

Admissions Limit: 30

Furthest distance offered: 0.664 miles

Over-Subscription Criteria

When either school is oversubscribed, after the admission of pupils with a Statement of Special Educational Needs, where the school is named on the statement, priority for admission will be given to those children who meet the criteria set out below, in order...

1. A "looked after child" or a child who was previously looked after but immediately after being looked after became subject to an adoption, child arrangement order or special guardianship*, including those who appear to have been in state care outside of England and ceased to be in state care as a result of being adopted. A looked after child is a child who is:
 - a In the care of the Local Authority, or
 - b Being provided with accommodation by the local authority in the exercise of their social services functions (see the definition in section 22(1) of the Children Act 1989)
2. Children who already have a sibling* within St. James' C of E Infant School at the time of admission.
3. Children living within the Walbrook Epiphany ecclesiastical parish. A map is available from the School office.
4. Requests would then be considered from children of parents (who wish their child to have a Church of England school education). Evidence of attendance at one of the Churches Together (see link, below) at least once a month for 12 months prior to the application, is to be provided by a priest or minister of religion, representing the church.
Churches Together are:
http://www.cte.org.uk/Groups/234690/Home/About/Member_Churches_of/Member_Churches_of.aspx
5. Other children will then be considered for places should these be available.

Tiebreaker for applications of equal strength: The line will be measured from the home address to the school using the National Ordnance Survey set points with those closest to the school having priority.

Academy School

Note: A brother or sister is classed as having one or both natural parents in common, are related by parents' marriage or are adopted or fostered. A brother or sister must be living at the same address. For the purpose of admissions, cousins are not classed as brothers or sisters.

St James' Church of England Junior

Reginald Street, Derby DE23 8FQ Telephone: 854985 Executive Headteacher: Mr J Gallimore

Session times: 9am - 3.25pm

School Details

Age Range	Open Evening	Where is uniform available from?	Does the school maintain a waiting list after the first term?
7-11	Contact the school	Uniform Direct	Yes

Accessibility

Disabled Parking	Basic Wheelchair Access into Main School Building	Basic Wheelchair Access into all Buildings on site	Disabled Toilet	Hygiene Room inc changing bed/shower
Street Parking Only	Yes – no disabled access to upstairs classrooms	NA	Yes	Yes

Offers

Intake	Admissions Limit	Number of applications	Offers	SEN	Cat 1	Cat 2	Cat 3	Cat 4	Cat 5	Allocated	Applications refused	Number of Appeals
2022	75	86	72	1	1	27	37	0	4	2	0	NA
2023	75	89	76	1	0	23	40	0	12	0	0	NA
2024	75	100	75	0	0	24	30	0	21	0	3	NA

Admissions Limit: 75

Furthest distance offered: 3.276 miles

Over-Subscription Criteria

When either school is oversubscribed, after the admission of pupils with a Statement of Special Educational Needs, where the school is named on the statement, priority for admission will be given to those children who meet the criteria set out below, in order...

1. Looked After Children (LAC) and previously PLAC, including those who have been in state care outside of England and ceased to be in state care as a result of being adopted. IAPLAC - Internationally Adopted Previously Looked After Children. For children who were in state care outside of England and were then adopted, you must submit evidence with your application so this priority can be verified. The evidence must show your child's adoption (an adoption order or adoption birth certificate); and - that they were in state care outside England (a letter from the state).
2. Siblings* of children already attending St James' CE Infant School or Rosehill Infant School who will still be at that school at the time of admission of the sibling.

Tiebreaker for applications of equal strength: The line will be measured from the home address to the school using the National Ordnance Survey set points with those closest to the school having priority.

* A brother or sister is classed as having one or both natural parents in common, are related by parent's marriage or are adopted or fostered. A brother or sister must be living at the same address. For the purpose of admissions, cousins are not classed as brothers or sisters.

Academy School

St John Fisher Catholic Voluntary Academy

Alvaston Street, Alvaston, Derby DE24 0PA Telephone: 572154 Headteacher: Mrs A Brett

Session times: 8.40am - 3.20pm

School Details

Age Range	Open Evening	Where is uniform available from?	Does the school maintain a waiting list after the first term?
5-11	Contact the school	Uniform Direct	Yes

Accessibility

Disabled Parking	Basic Wheelchair Access into Main School Building	Basic Wheelchair Access into all Buildings on site	Disabled Toilet	Hygiene Room inc changing bed/shower
Yes	Yes	NA	Yes	No

Offers

Intake	Admissions Limit	Number of applications	Offers	SEN	Cat 1	Cat 2	Cat 3	Cat 4	Cat 5	Cat 6	Cat 7	Cat 8	Applications refused	Number of Appeals
2022	30	46	25	0	0	15	0	0	0	3	0	7	0	NA
2023	30	41	16	0	0	10	0	0	0	3	0	3	0	NA
2024	30	30	14	0	0	5	0	0	1	1	0	7	0	NA

Admissions Limit: KS1: 30 KS2: 35

Furthest distance offered: 3.303 miles

Over-Subscription Criteria

Children who have a Statement of Special Educational Needs or Educational Health and Care Plan (EHCP) which names the academy will be admitted. This will reduce the number of places available.

First priority in all categories will be given to siblings that is, children who will have brothers or sisters attending the school at the proposed time of admission.

1. A Catholic 'looked after child' or a child who was previously looked after but immediately after being looked after became subject to an adoption, residence, or special guardianship order in accordance with Section 22(1) of the Children Act 1989.
2. Catholic children living in the parish served by the academy.
3. Catholic children living outside the parish.
4. A 'looked after child' or a child who was previously looked after but immediately after being looked after became subject to an adoption, residence, or special guardianship order in accordance with Section 22(1) of the Children Act 1989.
5. Catechumens, Candidates and members of Eastern Christian Churches.
6. Children of other Christian denominations whose membership is evidenced by a minister of religion.
7. Children of other faiths whose membership is evidenced by a religious leader.
8. Any other children not within categories 1-7.

If oversubscribed, priority (after sibling priority) will be given to children whose parents / carers have completed and returned a Mass Verification form where these have been requested.

If any categories are oversubscribed, (after sibling priority) priority will be to the child living nearest the school, measured by a straight line. The line will be measured from the home address to the school using the national Ordnance Survey set points. The distance will be measured by the local authority and the data will be supplied to governors.

Supplementary Information Form - to be returned directly to the school.

Note: A brother or sister is classed as having one or both natural parents in common, are related by parent's marriage or are adopted or fostered. A brother or sister must be living at the same address.

Academy School

St Joseph's Catholic Voluntary Academy

Mill Hill Lane, Derby DE23 6SB Telephone: 361660 Headteacher: Mrs T Churchill

Session times: 8.50am - 3pm

School Details

Age Range	Open Evening	Where is uniform available from?	Does the school maintain a waiting list after the first term?
5-11	Contact the school	Uniform Direct	Contact the school

Accessibility

Disabled Parking	Basic Wheelchair Access into Main School Building	Basic Wheelchair Access into all Buildings on site	Disabled Toilet	Hygiene Room inc changing bed/shower
Yes	Yes – School on several levels	NA	Yes	No

Offers

Intake	Admissions Limit	Number of applications	Offers	Cat 1	Cat 2	Cat 3	Cat 4	Cat 5	Cat 6	Cat 7	Cat 8	Applications refused	Number of Appeals
2022	50	88	50	0	15	10	0	6	7	5	7	8	Contact school
2023	50	102	50	0	17	12	0	4	6	4	7	14	Contact school
2024	50	100	50	0	17	7	0	2	10	1	13	7	Contact School

Admissions Limit: 50

Furthest distance offered: 0.994 miles

Over-Subscription Criteria

Children who have a Statement of Special Educational Needs or Educational Health and Care Plan (EHCP) which names the school will be admitted. This will reduce the number of places available.

1. First priority in all categories will be given to siblings that is, children who will have brothers or sisters attending the school at the proposed time of admission.
2. A Catholic 'looked after child' or a child who was previously looked after but immediately after being looked after became subject to an adoption, residence, or special guardianship order in accordance with Section 22(1) of the Children Act 1989.
3. Catholic children living in the parish served by the school.
4. Catholic children living outside the parish.
5. Other children who are 'looked after'. A 'looked after child' or a child who was previously looked after but immediately after being looked after became subject to an adoption, residence, or special guardianship order in accordance with Section 22(1) of the Children Act 1989.
6. Catechumens, Candidates and members of Eastern Christian Churches.
7. Children of other Christian denominations whose membership is evidenced by a minister of religion.
8. Children of other faiths whose membership is evidenced by a religious leader.
9. Any other children not within categories 1-7.

If oversubscribed, priority (after sibling priority) will be given to children whose parents / carers have completed and returned a Mass Verification form where these have been requested.

If **any categories** are oversubscribed, (after sibling priority) priority will be to the child living nearest the school, measured by a straight line. The line will be measured from the home address to the school using the national Ordnance Survey set points. The distance will be measured by the local authority and the data will be supplied to governors.

Supplementary Information Form - returned directly to the school.

Note: A brother or sister is classed as having one or both natural parents in common, are related by parent's marriage or are adopted or fostered. A brother or sister must be living at the same address.

Academy School

St Mary's Catholic Voluntary Academy and Nursery

Broadway, Derby DE22 1AU Telephone: 554831 Executive Headteacher: Mrs A Greaves Head of School: Mrs G Novak-Lemmings

Session times: 8.45am - 3.10pm

School Details

Age Range	No of Nursery Places	Open Evening	Where is uniform available from?	Does the school maintain a waiting list after the first term?
3-11	26 FT/52 PT	Contact the school	Morleys	Contact the school

Accessibility

Disabled Parking	Basic Wheelchair Access into Main School Building	Basic Wheelchair Access into all Buildings on site	Disabled Toilet	Hygiene Room inc changing bed/shower
Yes	Yes	NA	Yes	Yes

Offers

Intake	Admissions Limit	Number of applications	Offers	Cat 1	Cat 2	Cat 3	Cat 4	Cat 5	Cat 6	Cat 7	Cat 8	Applications refused
2022	60	64	35	0	5	5	0	3	3	0	19	0
2023	60	64	41	0	11	8	0	0	8	0	14	0
2024	51	85	47	0	5	9	0	0	5	2	26	0

Admissions Limit: 51

Furthest distance offered: 4.256 miles

Over-Subscription Criteria

Children who have a Statement of Special Educational Needs or Educational Health and Care Plan (EHCP) which names the school will be admitted. This will reduce the number of places available.

1. First priority in all categories will be given to siblings that is, children who will have brothers or sisters attending the school at the proposed time of admission.
2. A Catholic 'looked after child' or a child who was previously looked after but immediately after being looked after became subject to an adoption, residence, or special guardianship order in accordance with Section 22(1) of the Children Act 1989.
3. Catholic children living in the parish served by the school.
4. Catholic children living outside the parish.
5. Other children who are 'looked after'. A 'looked after child' or a child who was previously looked after but immediately after being looked after became subject to an adoption, residence, or special guardianship order in accordance with Section 22(1) of the Children Act 1989.
6. Catechumens, Candidates and members of Eastern Christian Churches.
7. Children of other Christian denominations whose membership is evidenced by a minister of religion.
8. Children of other faiths whose membership is evidenced by a religious leader.
9. Any other children not within categories 1-7.

If oversubscribed, priority (after sibling priority) will be given to children whose parents / carers have completed and returned a Mass Verification form where these have been requested.

If **any categories** are oversubscribed, (after sibling priority) priority will be to the child living nearest the school, measured by a straight line. The line will be measured from the home address to the school using the national Ordnance Survey set points. The distance will be measured by the local authority and the data will be supplied to governors.

Supplementary Information Form - returned directly to the school.

Note: A brother or sister is classed as having one or both natural parents in common, are related by parent's marriage or are adopted or fostered. A brother or sister must be living at the same address.

Academy School

St Peter's Church of England Junior School

Thornhill Road, Littleover, Derby DE23 6FZ Telephone: 767158 Headteacher: Mr F Smith

Session times: 8.50am - 3.30pm

School Details

Age Range	Open Evening	Where is uniform available from?	Does the school maintain a waiting list after the first term?
7-11	Contact the school	Uniform Direct	Yes

Accessibility

Disabled Parking	Basic Wheelchair Access into Main School Building	Basic Wheelchair Access into all Buildings on site	Disabled Toilet	Hygiene Room inc changing bed/shower
No	Yes – School on several levels	Restricted	Yes	Shower room – no changing bed

Offers

Intake	Admissions Limit	Number of applications	Offers	Cat 1	Cat 2	Cat 3	Cat 4	Cat 5	Cat 6	Cat 7	Allocated	Applications refused
2022	64	73	51	Contact the school							18	0
2023	64	79	52	Contact the school							12	0
2024	64	95	61	Contact the School							7	0

Admissions Limit: 64

Furthest distance offered: 2.882 miles

Over-Subscription Criteria

When the school is oversubscribed, after the admission of pupils with Statements of Special Educational Needs or EHCP where the school is named in the Statement, priority for admission will be given to those children who meet the criteria set out below.

1. Looked After Children (LAC) and previously LAC (PLAC), including those who have been in state care outside of England and ceased to be in state care as a result of being adopted or became subject to a child arrangement order or special guardianship order. IAPLAC - Internationally Adopted Previously Looked After Children. For children who were in state care outside of England and were then adopted, you must submit evidence with your application so this priority can be verified. The evidence must show your child's adoption (an adoption order or adoption birth certificate); and - that they were in state care outside England (a letter from the state).
2. Children who have a sibling* attending the school in years 3 to 5 at the time of application
3. Any other children will then be considered for places should these be available.

If the Governors have to make a choice between children with cases of equal strength (category 1 – 5), we will allocate places to those living nearest to the school, measured by a straight line.

*** **Note:** A brother or sister is classed as having one or both natural parents in common, are related by parent's marriage or are adopted or fostered. A brother or sister must be living at the same address.

Supplementary Information Form - to be returned directly to the school.

Academy School

St Werburgh's Church of England Primary School

Church Street, Spondon, Derby DE21 7LL Telephone: 673827 Headteacher: Mrs R Dean

Session times: 8.50am - 3.20pm

School Details

Age Range	Open Evening	Where is uniform available from?	Does the school maintain a waiting list after the first term?
5-11	Contact the school	Morleys in Chaddesden, Uniformity in Borrowash	Yes

Accessibility

Disabled Parking	Basic Wheelchair Access into Main School Building	Basic Wheelchair Access into all Buildings on site	Disabled Toilet	Hygiene Room inc changing bed/shower
Yes	Yes	NA	Yes	No

Offers

Intake	Admissions Limit	Number of applications	Offers	Cat 1	Cat 2	Cat 3	Cat 4	Cat 5	Cat 6	Applications refused	Number of Appeals
2022	45	62	28	0	15	1	10	0	2	0	NA
2023	45	85	40	0	15	5	16	0	4	0	NA
2024	45	81	38	0	17	1	14	0	6	0	NA

Admissions Limit: 45

Furthest distance offered: 4.257 miles

Over-Subscription Criteria

When the school is oversubscribed, after the admission of pupils with Statements of Special Educational Needs or EHCP where the school is named in the Statement, priority for admission will be give to those children who meet the criteria set out below, in order...

1. Looked After Children (LAC) and previously LAC (PLAC), including those who have been in state care outside of England and ceased to be in state care as a result of being adopted or became subject to a child arrangement order or special guardianship order. IAPLAC - Internationally Adopted Previously Looked After Children. For children who were in state care outside of England and were then adopted, you must submit evidence with your application so this priority can be verified. The evidence must show your child's adoption (an adoption order or adoption birth certificate); and - that they were in state care outside England (a letter from the state).
2. Children who will have a sibling* attending the school at the time of the proposed admission.
3. Other children.

In the case of a tie, priority will be given to the child living nearer to the school, measured by a straight line.

Note: A brother or sister is classed as having one or both natural parents in common, are related by parent's marriage or are adopted or fostered. A brother or sister must be living at the same address.

Academy School

Walter Evans Church of England Primary and Nursery School

Darley Abbey Drive, Darley Abbey, Derby DE22 1EF Telephone: 557139 Headteacher: Mr D Brown

Session times: 8.45am - 3.30pm

School Details

Age Range	No of Nursery Places	Open Evening	Where is uniform available from?	Does the school maintain a waiting list after the first term?
3-11	52	Contact the school	Morleys or schoolwearsolutions.com	Contact the school

Accessibility

Disabled Parking	Basic Wheelchair Access into Main School Building	Basic Wheelchair Access into all Buildings on site	Disabled Toilet	Hygiene Room inc changing bed/shower
Yes	Yes	Yes	Yes	No

Offers

Intake	Admissions Limit	Number of applications	Offers	Cat 1	Cat 2	Cat 3	Cat 4	Cat 5	Cat 6	Cat 7	Applications refused	Appeals
2022	60	107	60	1	0	32	8	0	19	0	0	NA
2023	60	81	51	0	22	10	3	0	17	0	0	NA
2024	60	106	55	2	27	7	17	0	2	0	0	NA

Admissions Limit: 60

Furthest distance offered: 7.173 miles

Over-Subscription Criteria

Children who have a Statement of Special Educational Needs or EHCP which names the school will be admitted. This will reduce the number of places available.

- 1) Looked After Children (LAC) and previously LAC (PLAC).
 - a) A looked after child is defined as a child who is (one of the following):
 - i) in the care of a local authority; or
 - ii) being provided with accommodation by a local authority's social services (see the definition in Section 22(1) of the Children Act 1989).
 - b) A previously looked after child is any child who was previously looked after but stopped being so because they were (one of the following):
 - i) adopted;
 - ii) became subject to a Special Guardianship order; or
 - iii) became subject to a Child Arrangements Order.
 - c) You must submit evidence of your child's previously looked after status (a copy of the court order and evidence of being in local authority care) with your application.
 - d) IAPLAC - Internationally Adopted Previously Looked After Children. For children who were in state care outside of England and were then adopted, you must submit evidence with your application so this priority can be verified. The evidence must show:
 - i) Your child's adoption (an adoption order or adoption birth certificate); and - that they were in state care outside England (a letter from the state).
- 2) Children who will have a sibling* attending the school at the time of their admission.
- 3) Other children whose parents have requested a place.
- 4) Children whose parents did not request a place before the deadline date. If there is more than one late application, Criteria 1 – 4 will be applied.

*A brother or sister is classed as having one or both natural parents in common, are related by parent's marriage or are adopted or fostered. A brother or sister must be living at the same address.

Academy School

Wyndham Spencer Primary Academy

Wyndham Street, Alvaston, Derby DE24 0EP Telephone: 571153 Principal: Mrs K Whiting

Session times: 8.50am - 3.20pm

School Details

Age Range	No of Nursery Places	Open Evening	Where is uniform available from?	Does the school maintain a waiting list after the first term?
3-11	39 FT/78 PT	Contact the school	Uniform Direct	Yes

Accessibility

Disabled Parking	Basic Wheelchair Access into Main School Building	Basic Wheelchair Access into all Buildings on site	Disabled Toilet	Hygiene Room inc changing bed/shower
Yes	Yes	Yes	Yes	No

Offers

Intake	Admissions Limit	Number of applications	Offers	SEN	Children Looked after	Catchment area Sibling	Out of Area Sibling	Catchment Area	Out of area nursery	Out of area	Allocated	Applications refused	Appeals lodged	Appeals allowed
2022	60	141	60	0	0	18	12	19	3	8	0	14	Contact school	Contact school
2023	60	115	60	0	1	15	16	9	4	15	0	2	Contact school	Contact school
2024	60	109	56	0	1	13	9	15	7	11	0	0	NA	NA

Admissions Limit: 60

Furthest distance offered: 2.154 miles

Over-Subscription Criteria

In the event of oversubscription, the following criteria will be applied, in priority order, to decide which applications will be granted once places have first been allocated to pupils who have a Statement of Special Educational Needs or EHCP which names the school.

1. Children who are looked after by a Local Authority - including previously looked after children.
2. Children who live within the catchment area at the closing date for applications and who at the time of admission will have a brother or sister attending the school.
3. Children who live outside the catchment area and who at the time of admission will have a brother or sister attending the school.
4. Other children who live in the catchment area at the closing date for applications.
5. Children who have attended Wyndham Primary Academy at Nursery level for more than two terms prior to Reception places being offered.
6. Children who have a parent who is a member of staff working within the Spencer Academies Trust.
7. Other children who live outside the catchment area.

Special consideration for all year groups

Children whose particular medical needs, mobility support needs, special educational needs or other social circumstances that are supported by written evidence from a doctor, social worker or other relevant professional giving reasons why the school is the only school which could cater for the child's particular needs. The evidence must be presented at the time of application. The school's Admissions Committee will consider the written evidence provided to decide whether the application may be processed as special circumstances. Admission under special circumstances will have priority over all but the first numbered criteria.

Where we have to make a choice between children who meet the same criteria, we will give priority to the child living nearest the school, measured by a straight line. The line will be measured from the home address to the school using the national Ordnance Survey set points.

Free School

Zaytouna Primary School

500 London Road, Derby DE24 8WH Telephone: 01332 383379 Headteacher: Mr A Bird

Session times: 8.45am - 3.15pm

School Details

Age Range	No of Nursery Places	Open Evening	Where is uniform available from?	Does the school maintain a waiting list after the first term?
4-11	Contact the school	Contact the school	Morleys	No

Accessibility

Contact the School

Intake	Admissions Limit	Number of applications	Offers	SEN	Children Looked after	Catchment area Sibling	Out of Area Sibling	Catchment Area	Out of area	Allocated	Applications refused	Appeals lodged	Appeals allowed
2022	60	64	52	*	*	*	*	*	*	*	14	NA	NA
2023	60	72	60	*	*	*	*	*	*	*	2	NA	NA
2024	60	85	60	*	*	*	*	*	*	*	0	1	1

Admissions Limit: 60

Furthest distance offered: 3.282 miles

* Contact the School

Over-Subscription Criteria

Where the number of applications for admission is greater than the published admission number in any age group, applications will be considered against the criteria set out below. After the admission of pupils with Education and Healthcare Plan, criteria will be applied for the remaining places in the order in which they are set out below.

- Looked-after children and all previously looked-after children who apply for a place at the school.
- Children with exceptional Medical or Social need that can only be met at the academy (having specialist provision for example). Applications in this category must be supported by a statement in writing from a doctor, social worker or other relevant suitably qualified professional. This is necessary because you are asking the academy to assess your child ahead of other children. Each case will be considered by the Admission Authority based on the interests of the child concerned.
- A child eligible to be registered for Free School Meals, and children who have been registered as eligible for Free School Meals at any point in the last 6 years.
- Children who have a sibling at the school at the time of application and admission.
- Up to 50% of places will be offered to children of the Islamic Faith.
- Up to 50% of all places will be offered to children without any reference to faith.
- Any other children.

In the event of oversubscription, within any of the above criteria, preference will be given to children who live nearest to the School as the crow flies** (see below).

In the event that two or more distances are exactly the same, the Zaytouna School will use a method of random allocation by lot, drawn by an independent person outside of the School.

*Definition of 'Looked After' children and previously 'Looked After' children

In accordance with the Education (Admissions of Looked After Children) (England) Regulations 2006 and in accordance with Section 22 of the Children Act 1989, a 'looked after child' is defined as:

- a child who is in the care of a Local Authority at the time an application for admission to the School is made
- a child who is being provided with accommodation by a Local Authority in the exercise of their social services functions in accordance with section 22(1) of the Children Act 1989 at the time of making an application to the School.

Previously Looked After children are children who were looked after, but ceased to be so because they were adopted (or became subject to a residence order or special guardianship order). Previously Looked After children are those who were adopted immediately following having been looked after.

Sibling is defined as children who live as brother or sister in the same house, including natural brothers or sisters, adopted siblings, stepbrothers or sisters and foster brothers and sisters. In the case of twins, or brothers and sisters in the same year group, where there is only one place available in the school, both will be considered together as one application.

**Proximity is measured as the straight-line distance from the School's main reception to the front door of the child's home. This 'straight line distance' will be determined using the National Ordnance Survey set points. The child's place of residence is taken to be the parental home, other than in the case of children fostered by a Local Authority, where either the parental address or the foster parent(s) address may be used.

Special Schools

Name and Address of School	Age Range	Head Teacher
Ivy House School Moorway Lane, Littleover, Derby DE23 7FS Telephone: 777920	2 - 19 years	Mr I Armstrong
St Giles' Hampshire Road, Derby DE21 6BT Telephone: 343039	5 - 11 years	Mr R Sherwood

As well as the nursery schools, we list and show a number of schools in the primary school list that have nursery units. The number of places that we show in nursery schools and units refers to the 15 hour part time places that could be delivered by the nursery units. A full list of voluntary, private and independent nursery providers can be provided by the Families Information Service on **01332 640758**, email: FIS@derby.gov.uk

Nursery Schools

Name and Address of School	Age Range	Head Teacher
Ashgate Nursery (Federated with Central Nursery) 18 Stepping Lane, Derby DE1 1GJ Telephone: 01332 371769	2-4 years	Mrs H Fearn
Central Community Nursery Nuns Street, Derby DE1 3LR Telephone: 01332 342647	3 months-4 years	Mrs H Fearn
Harrington Nursery Harrington Street, Derby DE23 8PE Telephone: 01332 769821	2-4 years	Mrs K Royle
Lord Street Community Nursery Lord Street, Allenton, Derby DE24 9AX Telephone: 01332 349363	2-4 years	Mrs C Hamilton
Stonehill Nursery (Federated with Dale Community Primary School) Stonehill Road, Derby DE23 6TJ Telephone: 01332 341636	2-4 years	Mrs L Foster
Walbrook Nursery Middleton Street, Derby DE23 8QJ Telephone: 01332 772434	2-4 years	Mrs B Suddhi
Whitecross Nursery Watson Street, Derby DE1 3PJ Telephone: 01332 371876	2-4 years	Mrs C Fitzpatrick

Nursery Entitlement

Early Learning and Childcare Funding

Early learning has a positive outcome for children by improving children's development. Giving them access to new activities and exciting places to play, children develop their communication and social skills and helps them make new friends; a good foundation for starting school.

[Take Off funding for children nine months+](#)

Take Off early learning childcare funding is for eligible working parents and can be taken up the term after your child turns 9-months-old. To be eligible, over the next 3 months you and your partner (if you have one) must each expect to earn at least:

- £2,380 before tax if you're aged 21 or over (equivalent to £183 per week)
- £1,788 before tax if you're aged 18 to 20 (equivalent to £137 per week)
- £1,331 before tax if you're under 18 or an apprentice (equivalent to £102 per week)
- And no more than £100,000 per year each.

If you are eligible you will receive up to 570 hours of funded childcare over 12 months, or 15 hours a week during school term time, or less hours can be taken over more weeks of the year, this is called a stretched offer.

Childcare providers offer many different funding models. You will need to speak to your childcare provider to find out what combination of fee paying and funded childcare sessions they offer. You may also have to pay for other additional costs such as meals, trips and consumables such as nappies and wipes.

This funded childcare can be used at schools, day nurseries, pre-school playgroups or with a registered childminder; the Families Information Service can help you find the childcare that best suits your child.

You must apply before the cut off dates to make sure you have a valid code and can take up a place.

- 31st August to start in the Autumn term, September,
- 31st December to start in the Spring term, January,
- 31st March to start in the summer term, April.

Once you have your 11-digit code you must give it to your childcare provider for them to check. You will also need to revalidate your code every three months, or you will lose your childcare funding.

[Flying Start funding for two-year-olds](#)

Some two-year-olds are entitled to up to 570 hours of funded early learning childcare per year, starting the term after the child's second birthday. This is often taken as 15 hours a week during school term time, less hours can be taken over more weeks of the year.

Childcare providers offer many different funding models. You will need to speak to your childcare provider to find out what combination of fee paying and funded childcare sessions they offer. You may also have to pay for other additional costs such as meals, trips, and consumables such as nappies and wipes.

This funded childcare can be used at schools, day nurseries, pre-school playgroups or with a registered childminder; the Families Information Service can help you find the childcare that best suits your child.

To be eligible for Flying Start funding, you need to be getting one of the following benefits:

- Income Support
- income-based Jobseeker's Allowance (JSA)
- income-related Employment and Support Allowance (ESA)

- Universal Credit, and your household income is £15,400 a year or less after tax, not including benefit payments
- child tax credits, and your household income is £16,190 a year or less before tax
- the guaranteed element of Pension Credit
- the Working Tax Credit 4-week run on (the payment you get when you stop qualifying for Working Tax Credit)

2-year-olds can also get funded childcare if they:

- are looked after by a local authority
- have a statement of special education needs (SEN) or an education, health and care (EHC) plan
- get Disability Living Allowance
- have left care under an adoption order, special guardianship order or a child arrangements order

If you're a non-UK citizen who cannot claim benefits, your 2-year-old may get funded childcare if your immigration status says you have 'no recourse to public funds'. Your household income after tax must be no more than:

- £26,500 for families outside of London with one child
- £34,500 for families within London with one child
- £30,600 for families outside of London with two or more children
- £38,600 for families within London with two or more children
- You cannot have more than £16,000 in savings or investments.

Once you have your 6-digit code you must give it to your childcare provider for them to check.

[All Aboard funding for three and four-year-olds](#)

All children, the term after their third birthday, are entitled to 570 hours of funded early learning each year and some families, where parents are working, are entitled to 1140 hours per year. Parents can choose how to use this funded early learning childcare; it can be taken during school term time or less hours per week can be stretched over more weeks of the year. Childcare providers offer many different funding models. You will need to speak to your childcare provider to find out what combination of fee paying and funded childcare sessions they offer. You may also have to pay for other additional costs such as meals, trips, and consumables such as nappies and wipes.

[Extended entitlement funding for three and four-year-olds](#)

Extended entitlement early learning childcare funding is for eligible working parents and can be taken up the term after your child turns three years old. To be eligible, over the next three months you and your partner (if you have one) must each expect to earn at least:

- £2,380 before tax if you're aged 21 or over (equivalent to £183 per week)
- £1,788 before tax if you're aged 18 to 20 (equivalent to £137 per week)
- £1,331 before tax if you're under 18 or an apprentice (equivalent to £102 per week)
- And no more than £100,000 per year each.

If you are eligible, you will receive an additional 570 hours of funded childcare over 12 month, or 15 hours a week during school term time, less hours can be taken over more weeks of the year. This totals to 30 hours per week or 1140 hours per year.

Childcare providers offer many different funding models. You will need to speak to your childcare provider to find out what combination of fee paying and funded childcare sessions they offer. You may also have to paid for other additional costs such as meals, trips, and consumables such as nappies and wipes.

This funded childcare can be used at schools, day nurseries, pre-school playgroups or with a registered childminder; the Families Information Service can help you find the childcare that best suits your child.

You must apply before the cut off dates to make sure you have a valid code and can take up a place:

- 31st August to start in the Autumn term, September,
- 31st December to start in the Spring term, January,
- 31st March to start in the summer term, April.

Once you have your 11-digit code you must give it to your childcare provider for them to check. You will also need to revalidate your code every three months, or you will lose your childcare funding.

Want to know more?

Find out more about [Tax Free Childcare](#), the childcare element of [Universal Tax Credits](#) and other ways to [make childcare more affordable](#).

Or if you want advice on finding and using suitable childcare, please contact the [Families Information Service](#) on:

Phone: 01332 640758

Email: fis@derby.gov.uk

Facebook: @DerbyFIS

Useful Contacts

Contact	Phone Number	Email/Web address
Child Health Department	01332 868816	www.dh.gov.uk
Childcare and Families Information Service	01332 640758	www.derby.gov.uk
DFE Hotline	0370 0002288	www.dcsf.gov.uk
Derbyshire County Council - General	01629 580000	www.derbyshire.gov.uk
Derbyshire County Council - South (Derbyshire, Amber Valley and Erewash)	01629 537479	www.derbyshire.gov.uk
Education Welfare	01332 641448	www.derby.gov.uk
Exclusions	01332 640983 01332 640936	www.derby.gov.uk
Free School Meals	01332 640444	www.derby.gov.uk
Ofsted	0300 1231231	www.ofsted.gov.uk
School Admissions	01332 642730	admissions@derby.gov.uk
Special Educational Needs and Disability Information, Advice and Support Service	01332 641414	sendiass@derby.gov.uk
School Transport	01332 642716	www.derby.gov.uk schooltravel@derby.gov.uk
SEND Team	01332 643616	EHCP@derby.gov.uk www.derby.gov.uk/sendlocaloffer

We can give you this information in any other way, style or language that will help you access it. Please contact us on **01332 642730** or **derby.gov.uk/signing-service/**

Punjabi

ਇਹ ਜਾਣਕਾਰੀ ਅਸੀਂ ਤੁਹਾਨੂੰ ਕਿਸੇ ਵੀ ਹੋਰ ਤਰੀਕੇ ਨਾਲ, ਕਿਸੇ ਵੀ ਹੋਰ ਰੂਪ ਜਾਂ ਬੋਲੀ ਵਿੱਚ ਦੇ ਸਕਦੇ ਹਾਂ, ਜਿਹੜੀ ਇਸ ਤੱਕ ਪਹੁੰਚ ਕਰਨ ਵਿੱਚ ਤੁਹਾਡੀ ਸਹਾਇਤਾ ਕਰ ਸਕਦੀ ਹੋਵੇ। ਕਿਰਪਾ ਕਰਕੇ ਸਾਡੇ ਨਾਲ ਇੱਥੇ ਸੰਪਰਕ ਕਰੋ: **01332 64XXXX** ਜਾਂ **derby.gov.uk/signing-service/**

Polish

Aby ułatwić Państwu dostęp do tych informacji, możemy je Państwu przekazać w innym formacie, stylu lub języku. Prosimy o kontakt: **01332 64XXXX** lub **derby.gov.uk/signing-service/**

Slovak

Túto informáciu vám môžeme poskytnúť iným spôsobom, štýlom alebo v inom jazyku, ktorý vám pomôže k jej sprístupneniu. Proším, kontaktujte nás na tel. č.: **01332 64XXXX** alebo na stránke **derby.gov.uk/signing-service/**

Urdu

یہ معلومات ہم آپ کو کسی دیگر ایسے طریقے، انداز اور زبان میں مہیا کر سکتے ہیں جو اس تک **derby.gov.uk/signing-service/** رسائی میں آپ کی مدد کرے۔ براہ کرم **01332 640000** یا پر ہم سے رابطہ کریں



Derby City Council

Derby City Council

The Council House Corporation Street Derby DE1 2FS

www.derby.gov.uk